

CATALOGUE

SLIDE





SLIDE



# INDEX

## WE MAKE

- 2 twenty years of making
- 6 in Italy
- 8 sustainable
- 10 design
- 12 art
- 14 all for you
- 16 you happy
- 18 together with you
- 20 with love

## PRODUCTS

- 22 icons
- 34 furniture
- 114 lights
- 172 hospitality
- 224 complements

## MATERIALS

- 266 standard polyethylene
- 268 special standard polyethylene
- 270 lighting polyethylene
- 272 special lighting finishing
- 274 lacquered matt/glossy
- 276 soft polyurethane
- 278 textile
- 280 hpl

# INDEX by TYPE

## SEATS

208	AMÉLIE	74	PONENTE
208	AMÉLIE DUETTO	218	PRINCESS OF LOVE
208	AMÉLIE PANCHETTA	214	Q4
208	AMÉLIE SGABELLO	106	QUEEN OF LOVE
208	AMÉLIE SIT UP	78	RAP
230	AMORE	78	RAP CHAIR
36	BIG KROKO	54	RIBS
88	BLOS	54	RIBS UP
88	BLOSSY	191	SNAKE
222	BOT ONE	193	SOFT CUBO
92	CHUBBY	192	SOFT SNAKE
92	CHUBBY LOW	222	SUMMERTIME
112	CUBO POUF	113	TARTA
112	DOUBLE U	36	THREEBÙ
223	DOUBLIX	113	TIC TAC
202	DRINK	223	VOILÀ
223	EXOFA	262	WAVE
112	GEAR	232	WOW
100	GELÉE	222	YPSILON
100	GELÉE GRAND	110	ZOE
100	GELÉE LOUNGE		
190	GIÒ POUF		
198	GLORIA		
199	GLORIA MEETING		
96	HAPPYLIFE		
262	IRON		
82	KAMI ICHI		
82	KAMI SAN		
82	KAMI YON		
204	KONCORD		
36	KROKO		
223	LAZY BONES		
108	LITTLE PRINCE OF LOVE		
109	LITTLE QUEEN OF LOVE		
64	LOW LITA		
64	LOW LITA LOUNGE		
64	LOW LITA LOVE		
58	MARA		
58	MARA POUF		
58	MARA SOFA		
216	MISTER OF LOVE		
32	PANDORO		

## TABLES

228	AMANDA
226	AMBROGIO
208	AMÉLIE UP
113	AMORE TABLE
88	BLOS LOW TABLE
92	CHUBBY SIDE TABLE
24	DUKE OF LOVE
111	ED
223	FIZZ
215	GINO
200	HOPLÀ
206	JET
82	KAMI NI
219	LORD OF LOVE
64	LOW LITA TABLE
58	MARA LOW TABLE
217	MASTER OF LOVE
46	OTTOCENTO
46	OTTOCENTO MINI
203	PEAK
196	PINT

220	SIR OF LOVE
113	SLOTH
197	SQUARE
113	TAO
113	TARTA LOW TABLE
113	TEA TIME
112	TOY
223	X2

## COMPLEMENTS

238	BOOKY
234	FRAME OF LOVE
240	HEXA
243	JOKER OF LOVE
245	KALIMERA
262	KOKÒ BOOK
244	LIGHT DRINK
262	MAG
236	MIRROR OF LOVE
263	MR. GIÒ
263	MR. GIÒ SPECCHIO
239	MYBOOK
263	MYFLOWER
242	OPEN CUBE
263	PIXEL

## COUNTERS

180	BREAK BAR
180	BREAK CORNER
180	BREAK LINE
174	CORDIALE
174	CORDIALE CORNER
174	CORDIALE WELCOME
180	ICE BAR
185	JUMBO BAR
185	JUMBO CORNER
187	ROLLER BAR
184	SNACK BAR
188	SPLAY
186	SWISH

## POTS

252	BAMBOO
256	BASE POT
260	BIG GIÒ
88	BLOS POT
263	CUBIC YO
257	GEAR POT
260	GIÒ MONSTER
260	GIÒ TONDO
258	IL VASO
263	MON AMOUR
254	PRIVÉ
250	QUADRA
251	QUADRA SEPARÉ
263	STAR
36	THREEBÙ POT
255	WAVE POT
246	X-POT
248	Y-POT

## LAMPS

158	ACQUAGLOBO
148	ALI BABA STEEL
150	ALI BABA WOOD
138	ALLURE
139	AURA
170	BIJOUX
169	BUBO
168	CARMEN
170	CONO
125	CORDIALE APPLIQUE
124	CORDIALE LUMIÈRE
135	CROWN OF LOVE
156	CUBO
156	CUBO HANGING
140	CUCUN
132	CUPOLE
134	DAME OF LOVE
154	DINO
131	ELIOS
149	FIACCOLA ALI BABA
169	FIAMMA

169	FIAMMETTA	32	SIRIO
170	FLUO	126	SPIN
128	FLUX	116	STILETTO APPLIQUE
128	FLUX HANGING	116	STILETTO SHARD
128	FLUX UP	116	STILETTO X
120	GIOTTO	116	STILETTO Y
158	GLOBO	171	SUNDAY
158	GLOBO HANGING	170	THERE
158	GLOBO TIGE	36	THREEBÙ TOTEM
171	GLOBO WALL		
151	GLOBO WOOD		
168	HERE		
171	ICO		
30	JUMPIE		
30	JUNIOR		
171	JUXT		
152	KING OF LOVE		
168	KOKÒ		
169	KOLME		
169	KUUSI		
24	LADY OF LOVE		
170	LIGHTREE		
169	LOVE		
136	LUNA		
153	MADAME OF LOVE		
170	MANHATTAN		
32	MERRY CUBO		
171	MESH		
162	MINERAL		
162	MINERAL HANGING		
162	MINERAL STAND		
162	MINERAL TIGE		
171	MOLLY		
222	MOON		
166	MURANO		
166	MURANO HANGING		
166	MURANO TIGE		
168	OTELLO		
30	OTELLO MINI		
146	PIVOT		
130	PLUME		
169	PRÊT-À-PORTER		
144	PUPA		
169	PURE		

# INDEX by LETTER

## A

158 ACQUAGLOBO  
148 ALI BABA STEEL  
150 ALI BABA WOOD  
138 ALLURE  
228 AMANDA  
226 AMBROGIO  
208 AMÉLIE  
208 AMÉLIE DUETTO  
208 AMÉLIE PANCHETTA  
208 AMÉLIE SGABELLO  
208 AMÉLIE SIT UP  
208 AMÉLIE UP  
230 AMORE  
113 AMORE TABLE  
139 AURA

## B

252 BAMBOO  
256 BASE POT  
260 BIG GIÒ  
36 BIG KROKO  
170 BIJOUX  
88 BLOS  
88 BLOS LOW TABLE  
88 BLOS POT  
88 BLOSSY  
238 BOOKY  
222 BOT ONE  
180 BREAK BAR  
180 BREAK CORNER  
180 BREAK LINE  
169 BUBO

## C

168 CARMEN  
92 CHUBBY  
92 CHUBBY LOW  
92 CHUBBY SIDE TABLE  
170 CONO  
174 CORDIALE

125 CORDIALE APPLIQUE  
174 CORDIALE CORNER  
124 CORDIALE LUMIÈRE  
174 CORDIALE WELCOME  
135 CROWN OF LOVE  
263 CUBIC YO  
156 CUBO  
156 CUBO HANGING  
112 CUBO POUF  
140 CUCUN  
132 CUPOLE

## D

134 DAME OF LOVE  
154 DINO  
112 DOUBLE U  
223 DOUBLIX  
202 DRINK  
24 DUKE OF LOVE

## E

111 ED  
131 ELIOS  
223 EXOFA

## F

149 FIACCOLA ALI BABA  
169 FIAMMA  
169 FIAMMETTA  
223 FIZZZ  
170 FLUO  
128 FLUX  
128 FLUX HANGING  
128 FLUX UP  
234 FRAME OF LOVE

## G

112 GEAR  
257 GEAR POT  
100 GELÉE

100 GELÉE GRAND  
100 GELÉE LOUNGE  
215 GINO  
260 GIÒ MONSTER  
190 GIÒ POUF  
260 GIÒ TONDO  
120 GIOTTO  
158 GLOBO  
158 GLOBO HANGING  
158 GLOBO TIGE  
171 GLOBO WALL  
151 GLOBO WOOD  
198 GLORIA  
199 GLORIA MEETING

## H

96 HAPPYLIFE  
168 HERE  
240 HEXA  
200 HOPLÀ

## I

180 ICE BAR  
171 ICO  
258 IL VASO  
262 IRON

## J

206 JET  
243 JOKER OF LOVE  
185 JUMBO BAR  
185 JUMBO CORNER  
30 JUMPIE  
30 JUNIOR  
171 JUXT

## K

245 KALIMERA  
82 KAMI ICHI  
82 KAMI NI

82 KAMI SAN  
82 KAMI YON  
152 KING OF LOVE  
168 KOKÒ  
262 KOKÒ BOOK  
169 KOLME  
204 KONCORD  
36 KROKO  
169 KUUSI

## L

24 LADY OF LOVE  
223 LAZY BONES  
244 LIGHT DRINK  
170 LIGHTREE  
108 LITTLE PRINCE OF LOVE  
109 LITTLE QUEEN OF LOVE  
219 LORD OF LOVE  
169 LOVE  
64 LOW LITA  
64 LOW LITA LOUNGE  
64 LOW LITA LOVE  
64 LOW LITA TABLE  
136 LUNA

## M

153 MADAME OF LOVE  
262 MAG  
170 MANHATTAN  
58 MARA  
58 MARA LOW TABLE  
58 MARA POUF  
58 MARA SOFA  
217 MASTER OF LOVE  
32 MERRY CUBO  
171 MESH  
162 MINERAL  
162 MINERAL HANGING  
162 MINERAL STAND  
162 MINERAL TIGE  
236 MIRROR OF LOVE  
216 MISTER OF LOVE



171 MOLLY  
263 MON AMOUR  
222 MOON  
263 MR. GIÒ  
263 MR. GIÒ SPECCHIO  
166 MURANO  
166 MURANO HANGING  
166 MURANO TIGE  
239 MYBOOK  
263 MYFLOWER

## O

242 OPEN CUBE  
168 OTELLO  
30 OTELLO MINI  
46 OTTOCENTO  
46 OTTOCENTO MINI

## P

32 PANDORO  
203 PEAK  
196 PINT  
146 PIVOT  
263 PIXEL  
130 PLUME  
74 PONENTE  
169 PRÊT-À-PORTER  
218 PRINCESS OF LOVE  
254 PRIVÉ  
144 PUPA  
169 PURE

## Q

214 Q4  
250 QUADRA  
251 QUADRA SEPARÉ  
106 QUEEN OF LOVE

## R

78 RAP

78 RAP CHAIR  
54 RIBS  
54 RIBS UP  
187 ROLLER BAR

## S

220 SIR OF LOVE  
32 SIRIO  
113 SLOTH  
184 SNACK BAR  
191 SNAKE  
193 SOFT CUBO  
192 SOFT SNAKE  
126 SPIN  
188 SPLAY  
197 SQUARE  
263 STAR  
116 STILETTO APPLIQUE  
116 STILETTO SHARD  
116 STILETTO X  
116 STILETTO Y  
222 SUMMERTIME  
171 SUNDAY  
186 SWISH

## T

113 TAO  
113 TARTA  
113 TARTA LOW TABLE  
113 TEA TIME  
170 THERE  
36 THREEBÙ  
36 THREEBÙ POT  
36 THREEBÙ TOTEM  
113 TIC TAC  
112 TOY

## V

223 VOILÀ

## W

262 WAVE  
255 WAVE POT  
232 WOW

## X

246 X-POT  
223 X2

## Y

248 Y-POT  
222 YPSILON

## Z

110 ZOE

*We Make*

TWENTY YEARS OF MAKING

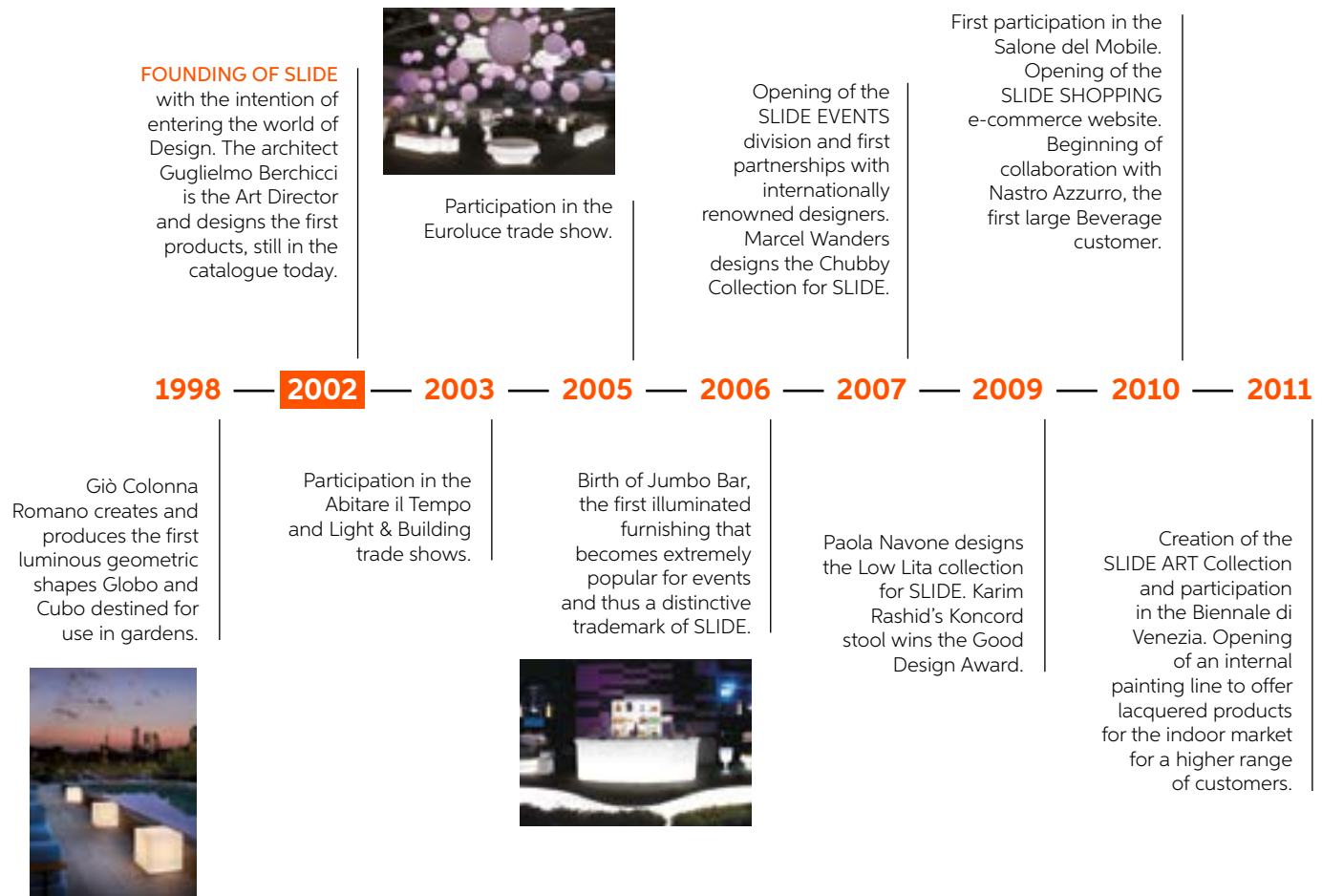
“Over the past twenty years, we have always created leading new products that have stood out and made us unique. We have therefore worked to create products that would uniquely identify SLIDE, as a distinctive hallmark: luminous furnishings, pop accessories, the Design of Love collection, the Amore and WOW benches, the Ambrogio and Amanda coffee tables, the Afrika collection, etc. All of these items are accompanied by armchairs, seats, more conventional tables and lamps with an elegant, contemporary design”.

*Giò Colonna Romano*



We have reached twenty years of business, a landmark but also a starting point, where we have used our art of making to create furniture and lights that make the places where our stories take place more precious. "Making" for us has two meanings: we are manufacturers, so we understand right down to the last particle used to create furniture; but we also create ideas, where our "We Make" philosophy is modelled on an initial project designed in-house or with the internationally renowned designers who have worked with us over the past twenty years. While still young, our history is that of a company set up to create ideas and eureka moments that have then become our core points.

In 2002, Giò Colonna Romano founded SLIDE, wanting to create awe and wonder. The first eureka moment came even before the creation of SLIDE: simple shapes, like spheres and cubes, created with translucent materials, whose inner light bulb emits a uniform light that adds decoration. Simple yet magical. With thirty years of knowledge of plastic materials, we pushed ourselves further to unleash the full potential of rotational moulding, and this led to our second eureka moment of luminous furnishing, which soon became a must-have in the event industry. All of this has led SLIDE to become well-known all around the world.



Throughout its history, SLIDE has been able to grow, innovate and stand out, offering complete furnishing for outdoors and for illuminating large spaces, residential and contract projects, but also small leading products for the home. With the generational change that began in 2015, Marco Colonna Romano, supported by a young, passionate team, transformed SLIDE into a designer brand for all intents and purposes, expanding the offer and combining the typical colourful pop products with an increasingly wide-ranging, refined line able to satisfy the tastes of architects and ideal for the hotel and contract sectors.

The resulting image is that of a young, innovative company based on sound principles since its inception: the high quality of Made in Italy and the continuous pursuit of excellence in rotational moulding technology. Playful shapes and colours are complemented by other materials, new tactile textures and shades and nuances that only SLIDE can create. Still deeply rooted in its birthplace – in Buccinasco, on the outskirts of Milan – where the offices and production hub are located, SLIDE has made a name for itself and its products in more than 130 countries around the world.

# TWENTY YEARS OF MAKING



Opening of the soft polyurethane production line, expanding the product range for contract orders. Presentation of Marc Sadler's Kami furnishing collection.

Generational handover: Marco Colonna Romano becomes CEO of SLIDE. Opening of the SLIDE Lounge for EXPO 2015, a dynamic showroom and temporary bar.

Opening of the SLIDE Showroom in Foro Buonaparte in Milan.



Issue of the first sustainability report. Ambrogio service table by Favaretto&Partners is already a best-seller and the first product made of second-life plastic.

2012 — 2013 — 2014 — 2015 — 2016 — 2017 — 2019 — 2021 — 2022

SLIDE enters the Elite programme of the Italian stock exchange. New collections designed by Alessandro Mendini.

Acquisition of the Design of Love collection and subsequent expansion.



The architect Roberto Paoli becomes Art Director of SLIDE.

Our concept "Contemporary Tradition" comes to life thanks to the collections designed by Lorenza Bozzoli, Fabio Novembre and Roberto Paoli. In this way, the industrial production and the craftsmanship get closer.



Afrika collection launch, that marks also the beginning of the cooperation with artist and designer Marcantonio.  
**TO BE CONTINUED...**

*We Make*  
IN ITALY



Right from the outset, one of our goals has been to bring the quality, creativity and culture of Made in Italy design all around the world, using a material that allows us to show our full potential: low-density polyethylene, processed employing a method that aims to minimise partially harmful emissions. Thanks to the collaboration of all divisions with the research and development department, over the years, we have managed to combine the spirit of craftsmanship with industrial processing.

A line was therefore created where nuances and finishes become unrepeatable and every product is therefore unique. We want our Made in Italy design to be an ethical choice, where ideas and their creation take place all in the same building. Choosing a SLIDE product means choosing a sustainable design and putting beauty and quality within everyone's reach.



*We Make*  
SUSTAINABLE





Our production is entirely carried out with a view to the ethical path of a circular economy. This starts with our rotational moulding technology, which minimises any potentially harmful emissions and has a low environmental impact. Furthermore, thanks to the installation of solar panels on our warehouses, we have made a real turning point in the use of renewable resources that make the company even more independent in terms of energy. Made from 100% recyclable polyethylene, at the end of their lives, our products are returned to plastic powder, ready to be used for other 100% recycled furniture, particularly in Jet Black colour. Recycling also creates the most refined part of our collection, through product lacquering, the jewel in our crown. Painting the surfaces of our products helps cover up any scratches or small imperfections that might appear during production and therefore to salvage them into much finer objects, with the same resistance as all the others.

Thanks to our Research and Development department and our suppliers, we have added new, more ethical and durable raw materials. In fact, Ambrogio and Amanda are made with a new plastic, Geco, with 30% EcoAllene, a material entirely recycled from Tetra Pak cartons, which would otherwise be sent to incinerators. The Afrika collection, with its more textured colours, is made from bioplastic, a new material made from natural sugarcane fibres. In our new collections, we wanted not only to look at the aesthetics of the product but also at the beauty of our surrounding world, which we want to preserve thanks to a low environmental impact.



# We Make DESIGN



ALESSANDRO MENDINI



GIÒ COLONNA ROMANO



FABIO NOVEMBRE



ROBERTO PAOLI



STEFANO GIOVANNONI



KARIM RASHID



ITALO PERTICHINI



ILARIA MARELLI



FLAVIO LUCCHINI



GIULIO CAPPELLINI



ANTONIO LANZILLO & PARTNERS



AKSU & SUARDI STUDIO

The strength of our products also comes from our collaboration with some of the brightest minds on the international design scene. Over the past twenty years of business, our catalogue has grown together with them.

Many names have joined our family over the past twenty years: we have worked with about forty creatives from all around the world, some of them are already well-known, while others are very promising young talents.



MARCANTONIO



PAOLA NAVONE



GUGLIELMO BERCHICCI



MARTINELLI VENEZIA STUDIO



MORO & PIGATTI



FAVARETTO&PARTNERS



MARC SADLER



LORENZA BOZZOLI



MARCEL WANDERS

*We Make*  
ART



KARIM RASHID - TWIST, 2011

SLIDE Art is a sculpture project where Art and Design meet, combining their main special features: Design becomes higher conceptually, while Art becomes serially reproducible, in a limited number. Thought and creativity therefore meet Italian craftsmanship, creating a new concept of Art, which shapes the material and turns it into sculptures produced in limited, numbered and certified pieces.

SLIDE Art is a hotbed of ideas where designers and artists can experiment with shapes, materials and concepts, supported by the expertise, knowledge and experience developed by SLIDE, in a dialogue that can combine a single work from two core elements, that of Design and Art, which are so similar yet so different. Alessandro Mendini, Karim Rashid, Anna Gili, Sacha Sosno, Jean Claude Fahry and Ben Vautier are just a few of the illustrious names that have taken part in the project.



*We Make*  
ALL FOR YOU



Over the years, we have improved the comfort, along with the uniformity of light and the ergonomics of our products. We have therefore developed increasingly advanced furniture, we have played with textures and nuances capable of embellishing polyethylene, and we have researched into elements and accessories that would make our products really refined goods.

We have perfected our lights, so they can create even more striking atmospheres. This results in a range of complete furniture for every type of indoor and outdoor contract project.



25 HOURS HOTEL - FLORENCE (ITALY)



FREYSITZ BAR - HALLEIN (AUSTRIA)

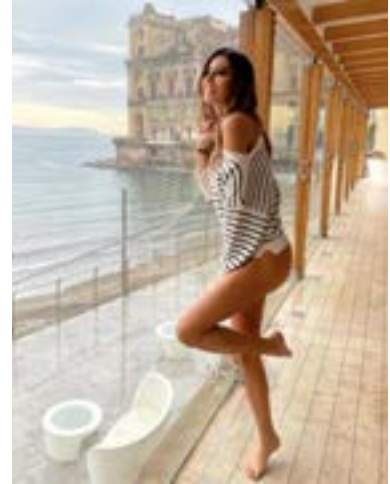


MERCI DESIGN SHOP - PARIS (FRANCE)

# We Make YOU HAPPY



#IRONY



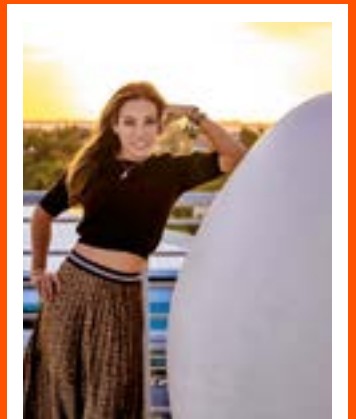
#WONDER



#DREAMTEAM



#LOVE



#HAPPINESS



#RENOVATION

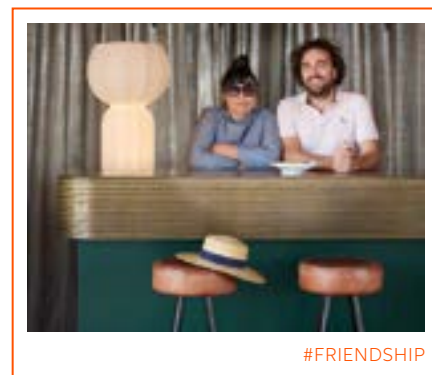
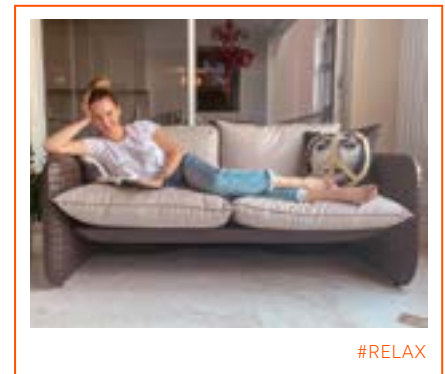
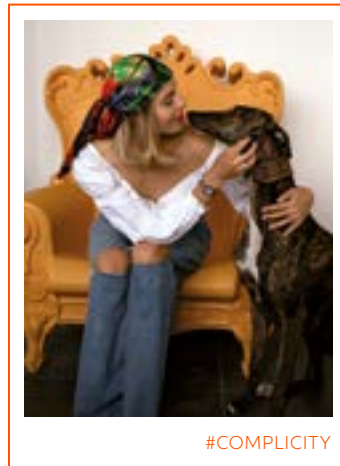
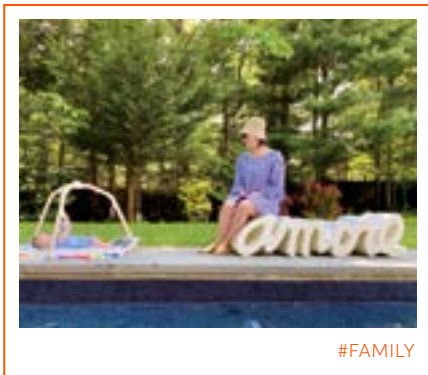


#SPIRITUAL



Sharing your precious moments with us is what makes us proud of what we do. We like to think that all of our products are more than just objects, seeing them as inhabitants of a world that we share and that we can help change through our behaviours and habits.

We are happy when you manage to improve your surrounding world, together with one of our products: durable, sustainable and lovable. Thank you to everyone who has chosen us.



*We Make*

TOGETHER WITH YOU



Magic and awe are encapsulated in lightweight, resistant furniture that is easy to move. From a desire to ensure that every event is unique and unforgettable comes the possibility of adjusting and customising our furniture with your logos, colours and accessories.

Over the past 20 years, we have been part of so many installations, which have led us to celebrate private and corporate events with you and to furnish your displays. We could not be happier when seeing you spend memorable moments accompanied by our furniture.



CLUB MORITZINO - CANTINE FERRARI



EMPORIO ARMANI WINTER EVENT



APEROL CUSTOM-MADE BENCH - CAMPARI

*We Make*  
WITH LOVE



It has been 20 years full of innovation, new products and discoveries: a whirlwind that has led us to develop more and more product lines and to diversify our offer to provide the right product for your projects. Our catalogue is a guide for your needs: from accessories right up to a large part dedicated to the world of projects and events.

It is a journey through our art of making, shaped for you and with you in order to give you the perfect environment to live your life.



# *We Make* ICONS

Over the past twenty years, we have created accessories with a unique design to make your spaces unforgettable. Five ways to be different, each with its own unique nature.





BE GLAMOUROUS  
BE POP  
BE COLOURFUL  
BE BRIGHT  
BE MERRY

# BE GLAMOUROUS

For contemporary spirits, but with a more distinguished look. Our lacquered products add a glamorous, refined taste to any indoor and outdoor space, thanks to their elegant surfaces and sophisticated, customisable colours.



1. **IL VASO** pot | p. 258
2. **HERE** table lamp | p. 168
3. **MINERAL STAND** floor lamp | p. 162
4. **MIRROR OF LOVE size L** mirror | p. 236
5. **MIRROR OF LOVE size XL** mirror | p. 236
6. **AMBROGIO** servant table | p. 226
7. **AMANDA** servant table | p. 228
8. **LADY OF LOVE** table lamp
9. **AMORE** bench | p. 230
10. **MINERAL STAND** table lamp | p. 162
11. **DUKE OF LOVE** coffee table
12. **CUBIC YO** pot | p. 263





# BE POP

If you love unusual shapes and colours, our pop style will brighten up any environment. With their vibrant colours and exciting design, our products are ready to turn into the perfect element to stand out, to send a message or for a unique touch.

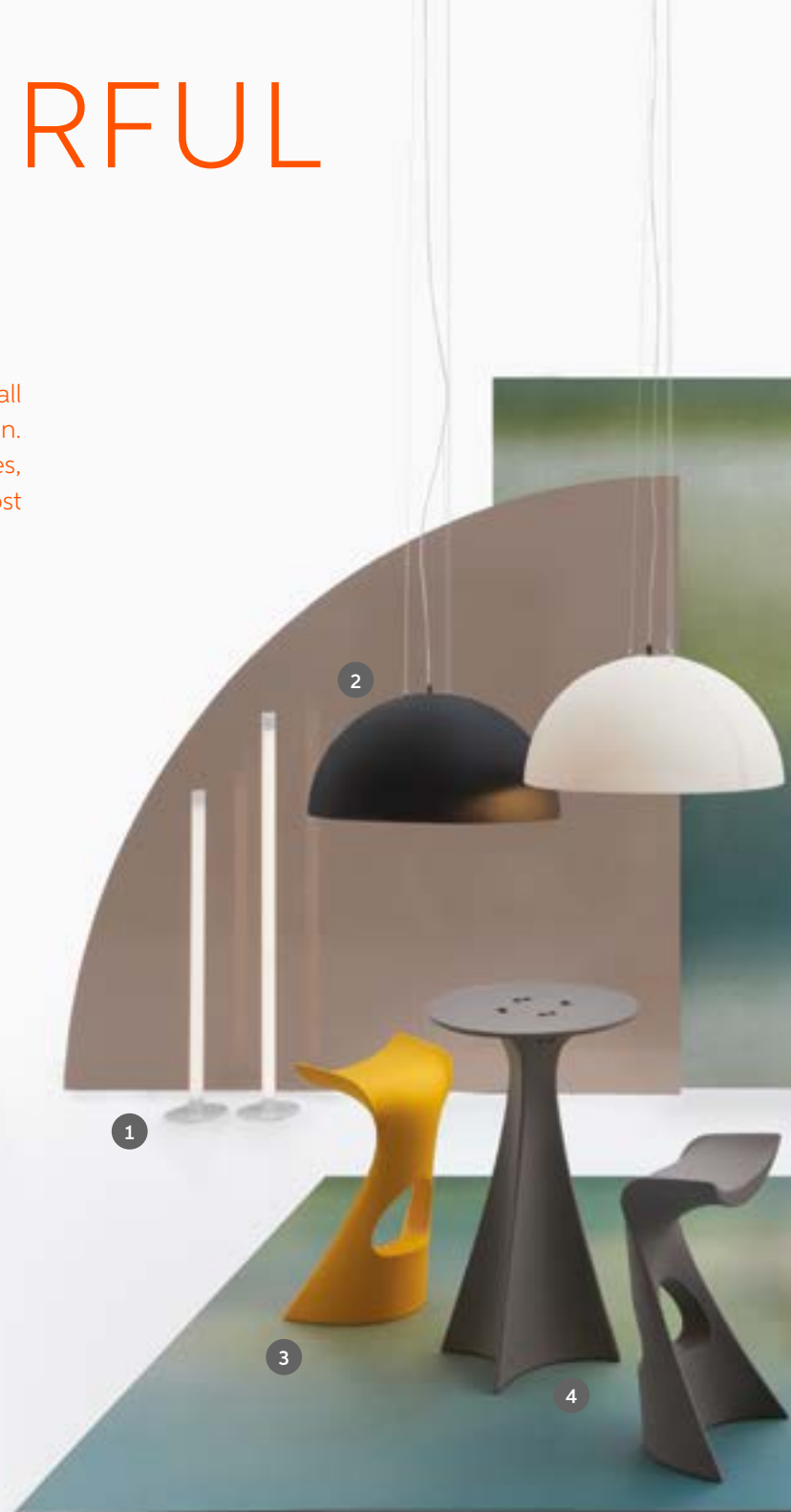


1. **GEAR** stool, coffee table | p. 112
2. **DOUBLE U** stool | p. 112
3. **ICO** hanging lamp | p. 171
4. **SUNDAY** hanging lamp | p. 171
5. **JUXT** hanging lamp | p. 171
6. **TOY** coffee table | p. 112
7. **MYBOOK** bookcase | p. 239
8. **WOW** bench | p. 232
9. **FLUO** floor lamp | p. 170



# BE COLOURFUL

For the more extravagant, designers from all over the world have given free rein to their imagination. Featuring many bright colours or more natural shades, our colourful side is ready to amaze even the most creative characters.



1. **FLUX** floor lamp | p. 128
2. **CUPOLE** hanging lamp | p. 132
3. **KONCORD** high stool | p. 204
4. **JET** table | p. 206
5. **GELEE** soft pouf | p. 100
6. **MR. GIÒ** valet | p. 263
7. **MR. GIÒ SPECCHIO** mirror | p. 263
8. **ELIOS** hanging lamp | p. 131
9. **MAG** magazine rack | p. 262
10. **THREEBÙ** stool, coffee table | p. 36
11. **LOW LITA** low chair | p. 64
12. **OTTOCENTO MINI size L** coffee table | p. 46
13. **OTTOCENTO MINI size M** coffee table | p. 46



6

5

9

7

11

8

10

12

13

# BE BRIGHT

Small objects, big players. Our table lamps are a smaller size but have a big personality, capable of surprises. Thanks to their unusual appearance, they are ready to become the perfect companions for the home and beyond.



1. **LUNA** table lamp | p. 136
2. **PRÊT-À-PORTER** table lamp | p. 169
3. **PUPA** table lamp | p. 144
4. **LOVE** table lamp | p. 169
5. **KOKÒ** table lamp | p. 168
6. **PURE** table lamp | p. 169
7. **JUMPIE** table lamp
8. **JUNIOR** table lamp
9. **GLOBO** table/floor lamp | p. 158
10. **OTELLO MINI** table lamp
11. **CARMEN** table lamp | p. 168
12. **BUBO** table lamp | p. 169
13. **CUBO** table/floor lamp | p. 156



# BE MERRY

The joy of winter festivities overflows thanks to furniture items and accessories that can create the perfect atmosphere for displays, homes, restaurants and hotels. For anyone who loves winter, here are our reinterpretations with a contemporary, pop twist of the symbols we all know and love.



1. **SIRIO** hanging lamp
2. **MERRY CUBO** table/floor lamp
3. **FIAMMETTA / FIAMMA** table lamp | p. 169
4. **LIGHTTREE** table/floor lamp | p. 170
5. **KOLME** table lamp | p. 169
6. **KUUSI** table lamp | p. 169
7. **PANDORO** stool





*We Make*

FURNITURE



# AFRIKA COLLECTION

Design  
MARCANTONIO

Collection  
KROKO  
BIG KROKO  
THREEBÙ  
THREEBÙ POT  
THREEBÙ TOTEM

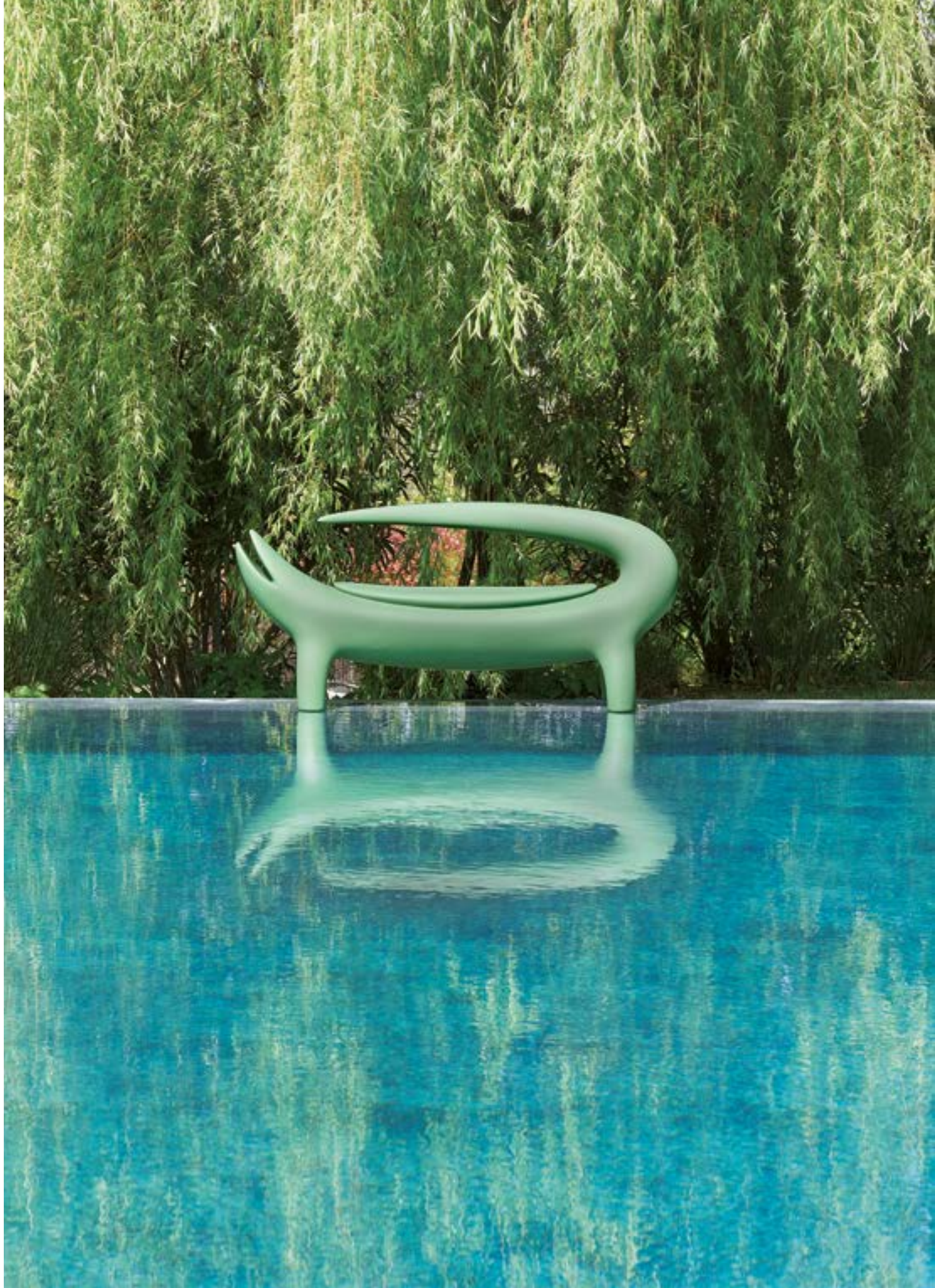


A distant and iconic world becomes contemporary and close to us thanks to the most serious characteristic of all: irony. Marcantonio's unmistakable style signs Afrika collection: the Kroko chairs and the Threebù items.











“Kroko is at the same time an industrial item and a sculpture, with references to Nature and contemporary art, thanks to its hinted but also unmistakable shape”.

*Marcantonio*









## AFRIKA COLLECTION

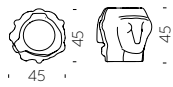
material POLYETHYLENE



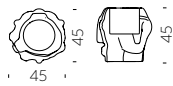
KROKO



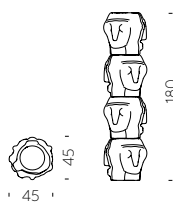
BIG KROKO



THREEBÙ



THREEBÙ POT



THREEBÙ TOTEM



# OTTOCENTO COLLECTION

Design  
PAOLA NAVONE - OTTO STUDIO

Collection  
OTTOCENTO SIZE M  
OTTOCENTO SIZE L  
OTTOCENTO MINI SIZE M  
OTTOCENTO MINI SIZE L



“Inspired by the shapes of Neoclassicism, the purity of the material is linked to the classic nature of the shapes, which remind of the luxury of marble and the elegance of dark colours”.







Ottocento is an indoor and outdoor table available in two polyethylene base sizes, combinable with different shapes and finishes HPL tops. Thanks to a collaboration between the designer and SLIDE production department, every table is a unique piece.



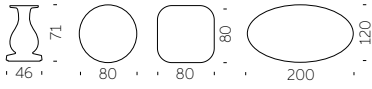




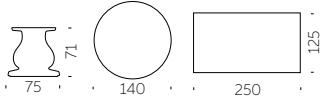


## OTTOCENTO COLLECTION

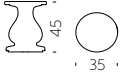
material POLYETHYLENE  
HPL TABLETOP



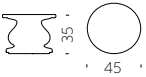
OTTOCENTO SIZE M



OTTOCENTO SIZE L



OTTOCENTO MINI SIZE M



OTTOCENTO MINI SIZE L



# RIBS COLLECTION

Design  
PAOLA NAVONE - OTTO STUDIO

Collection  
RIBS  
RIBS UP



Ribs and Ribs up, with their friendly and familiar design, have organic shapes but a strong and contemporary pop soul. Their essential elegance of the structure matches perfectly with the volumes typical of rotational moulding.

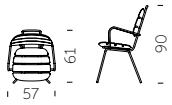




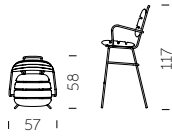


# RIBS COLLECTION

material POLYETHYLENE  
STEEL CHASSIS



RIBS



RIBS UP



RIBS COLLECTION / PAOLA NAVONE - OTTO STUDIO

WE MAKE FURNITURE

# MARA COLLECTION

Design  
LORENZA BOZZOLI

Collection  
MARA  
MARA SOFA  
MARA POUF  
MARA LOW TABLE



“The woven leather comes to life in all the texture of the Mara collection structure to reproduce also on the plastic material the imperfect and tactile intertwining typical of leather hand manufacturing. The unique texture is combined with the soft cushions in waterproof fabric and suitable for outdoor use”.



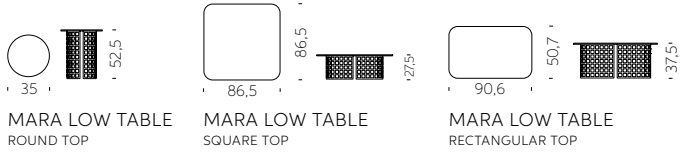
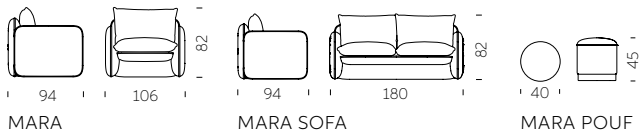






## MARA COLLECTION

material POLYETHYLENE, TEXTILE CUSHION (for seats)  
ZINC-COATED IRON, HPL TABLETOP (for coffee tables)



# LOW LITA COLLECTION

Design  
PAOLA NAVONE - OTTO STUDIO

Collection  
LOW LITA  
LOW LITA LOVE  
LOW LITA LOUNGE  
LOW LITA TABLE



“This collection is dedicated to the pleasure of relax both outdoor and indoor, it looks informal, fun and nice. Low Lita collection tells stories of different worlds which “mix-up” with joy”.





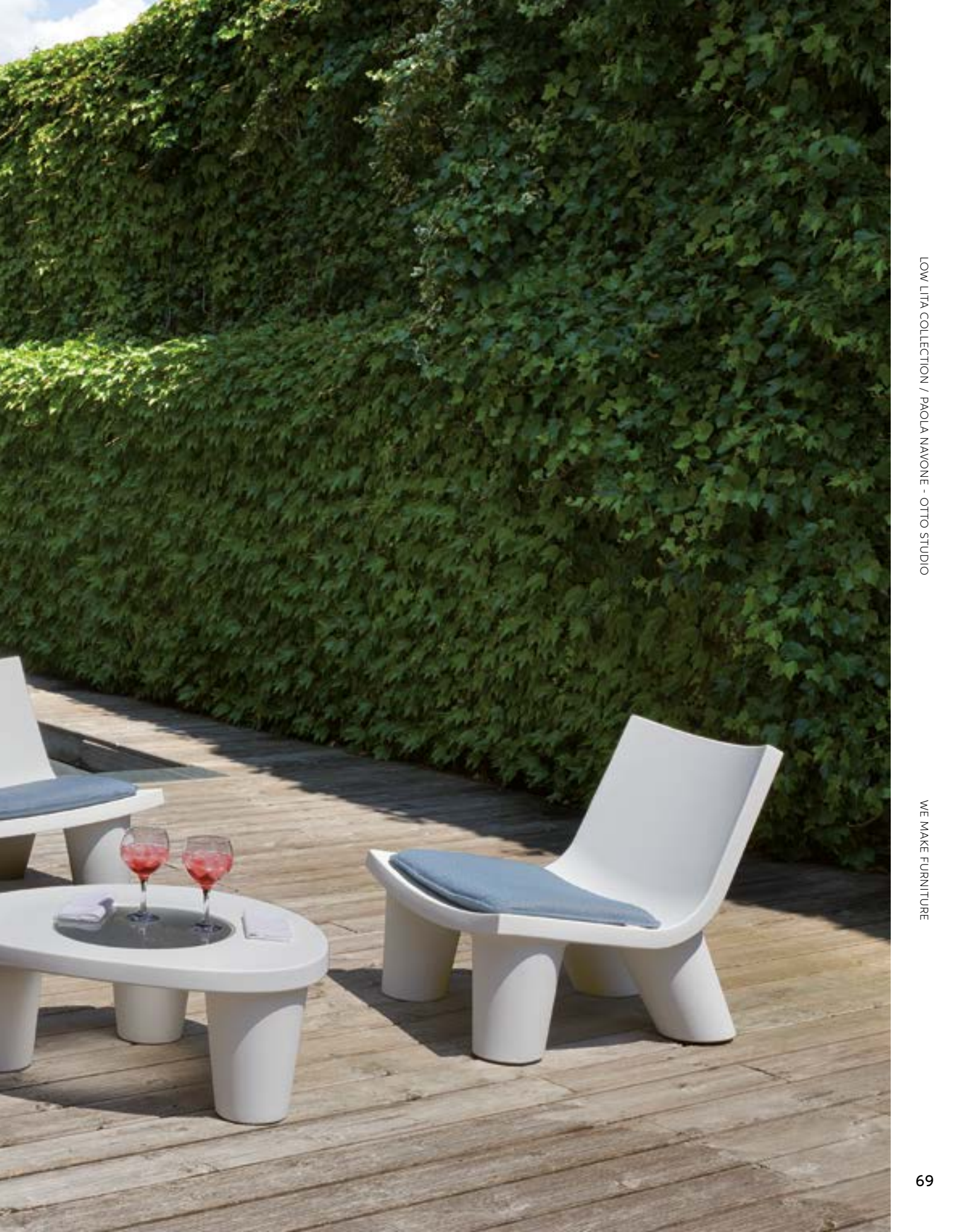


“Low Lita can remind of a seat with an African style of an exotic country. Unexpectedly, it becomes something different but also contemporary, thanks to its material and the technique used to realize it”.

*Paola Navone*

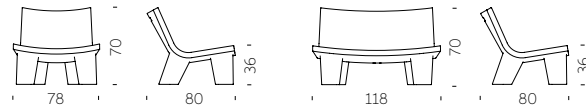






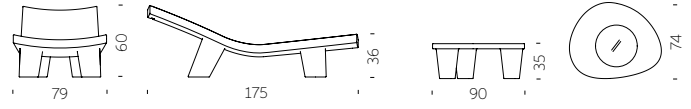
## LOW LITA COLLECTION

material POLYETHYLENE  
TEXTILE CUSHION



LOW LITA

LOW LITA LOVE



LOW LITA LOUNGE

LOW LITA TABLE









## ANNIVERSARY EDITION

We celebrate the iconic Low Lita with a new nuance, born from the perfect match between Paola Navone's incredible creativity and the deep knowledge of Slide in the processing of plastic materials.

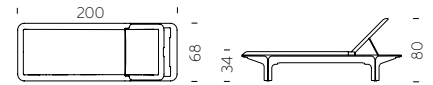
Low Lita Anniversary collection is not a special edition, but it is unique: its black and white nuances are the result of the craftsmanship of rotational moulding; these nuances are not replicable so to personalize each product.



# PONENTE

Design  
MARTINELLI VENEZIA STUDIO

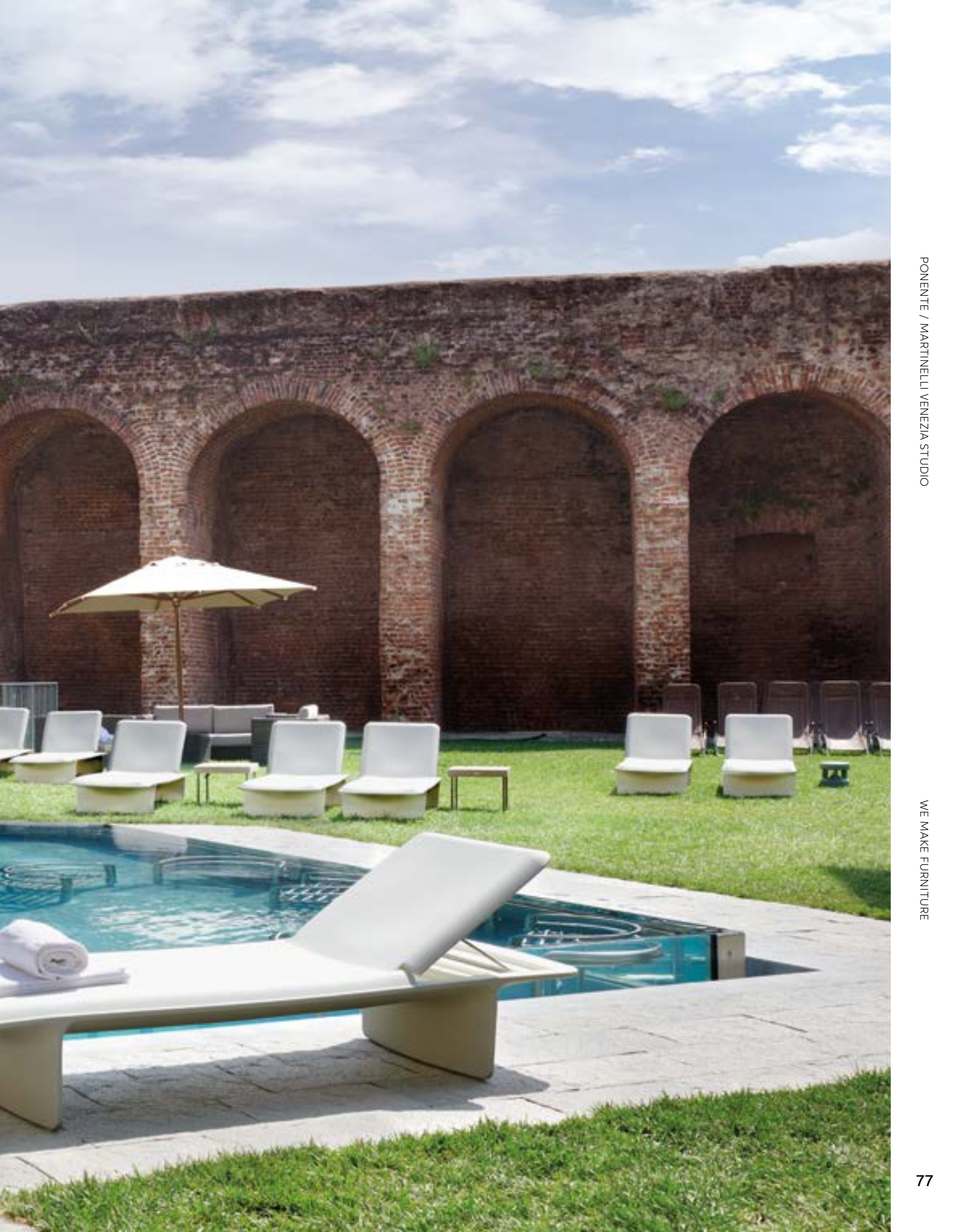
category sun lounger  
material polyethylene  
textile cushion



The perfect balance between soft shapes, typical of the creations obtained through rotational moulding, and thin thickness, which allows reducing the physical and perceptive weight of a large object. Elegant and cosy, thanks to the adjustable backrest in different inclinations, Ponente can be completed with a comfortable soft fabric cushion for outdoor.







# RAP COLLECTION

Design  
KARIM RASHID

Collection  
RAP CHAIR  
RAP

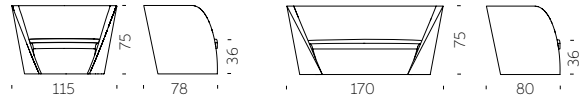


Ideal to create unforgettable indoor or outdoor corners, the Rap collection is a magnet with its minimal but unusual design. The shape of the backrest embraces whoever sits on. The Rap collection gives comfort, relax and a sense of protection that allow you to enjoy a lovely moment.



## RAP COLLECTION

material POLYETHYLENE  
TEXTILE CUSHION



RAP CHAIR

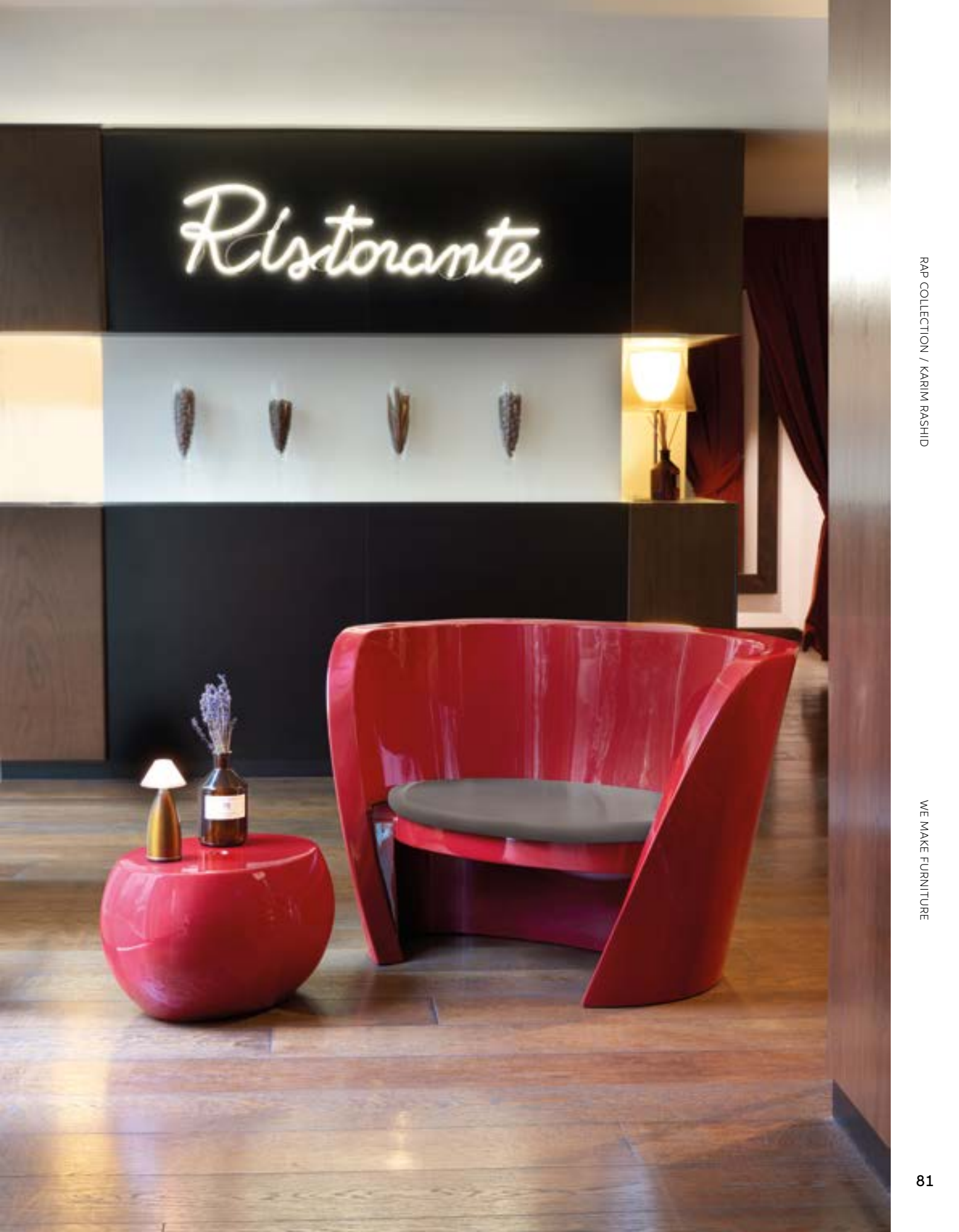
RAP

RAP COLLECTION / KARIM RASHID

WE MAKE FURNITURE







# KAMI COLLECTION

Design  
MARC SADLER

Collection  
KAMI ICHI  
KAMI SAN  
KAMI YON  
KAMI NI



“The name of the collection takes its inspiration from the ancient Japanese art of folding papers. The shapes traced by lines and bisectors characterizes the armchair and the sofa, as well as the seats with the related small table”.

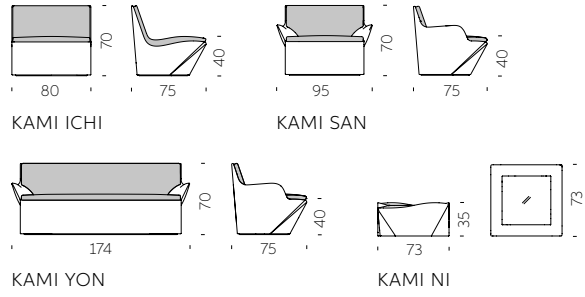






### KAMI COLLECTION

material POLYETHYLENE  
TEXTILE CUSHION





# BLOS COLLECTION

Design  
KARIM RASHID

Collection  
BLOS  
BLOSSY  
BLOS LOW TABLE  
BLOS POT



"I always work with the strengths of a client. Slide's strengths lie in their joy for form and mastery of rotomolding. Blos collection comes from that gregarious and expansive personality. The round bulbous forms envelop those sitting and rock gently creating a positive cocooning feeling".

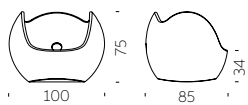




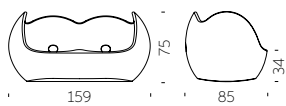


## BLOS COLLECTION

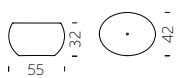
material POLYETHYLENE



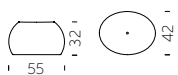
BLOS



BLOSSY



BLOS LOW TABLE



BLOS POT



# CHUBBY COLLECTION

Design  
MARCEL WANDERS

Collection  
CHUBBY  
CHUBBY LOW  
CHUBBY SIDE TABLE



“Chubby was projected as a plastic reinterpretation of the Crochet Chair, an armchair composed of crocheted fiber which has been hardened with epoxy and designed in a limited edition. The open structure and lightness of the chair provided a nice contrast”.

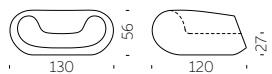




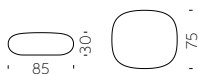
## CHUBBY COLLECTION

material POLYETHYLENE

GLASS TABLETOP (for coffee table)



CHUBBY



CHUBBY LOW



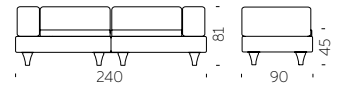
CHUBBY SIDE TABLE



# HAPPYLIFE

Design  
BEDINI, MARZANO, SETTIMELLI

category sofa  
material polyethylene  
textile/ecoleather cushion



As a classic nineteenth-century lounge sofa, HappyLife has all the features of comfort and stability. Depending on the needs, it can be a useful flat surface or a comfortable sofa, thanks to the addition of padded cushions available in eco-leather or fabric, both waterproof for outdoor use.









# GELÉE COLLECTION

Design  
ROBERTO PAOLI

Collection  
GELÉE  
GELÉE GRAND  
GELÉE LOUNGE



“Being inspired by jelly candies I designed Gelée, a soft and nice touch pouf, that converts a familiar product in something else, placed in a different context, made in new dimensions. The result is a comfortable seat which shape and colour immediately stimulates leisure, desire of touching and testing its comfort”.





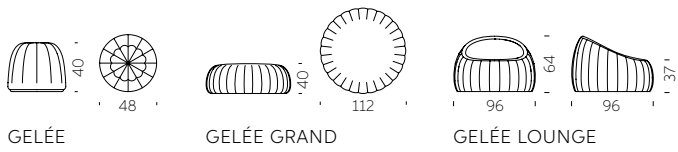






# GELÉE COLLECTION

material SOFT POLYURETHANE



# QUEEN OF LOVE

Design  
**MORO & PIGATTI**

category **armchair**  
material **polyethylene**



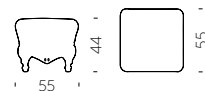
“The Design of Love collection is a box of ideas and emotions that arise from the simplicity of a unique material: the recyclable linear polyethylene. The collection is completely Made in Italy and has brought a touch of freshness and an innovative approach to the design world by re-interpreting the Baroque furniture in a Pop way”.



# LITTLE PRINCE OF LOVE

Design  
MORO & PIGATTI

category pouf  
material polyethylene



LITTLE PRINCE OF LOVE / MORO & PIGATTI

WE MAKE FURNITURE



# LITTLE QUEEN OF LOVE

Design  
**MORO & PIGATTI**

Little Queen of Love is the smaller model of the iconic Queen of Love armchair. The Baroque style of its shapes and the pop style of polyethylene make Little Queen of Love a small star in every room it occupies, for both contract and homes.

category **kids armchair**  
material **polyethylene**



LITTLE QUEEN OF LOVE / MORO & PIGATTI



WE MAKE FURNITURE

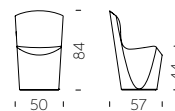
# ZOE

ZOE / GUGLIELMO BERCHICCI

WE MAKE FURNITURE

Design  
**GUGLIELMO BERCHICCI**

category **chair**  
material **polyethylene**

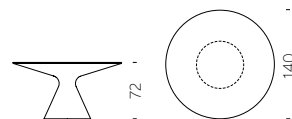


# ED

Design  
**GUGLIELMO BERCHICCI**

Ed table is the perfect mix between different shape and material: its conical base is in polyethylene and its round top in tempered glass. Its soul mate is Zoe, a sinuous and elegant chair. Both of them can give a magic touch in their luminous version.

category **table**  
material **polyethylene**  
**tempered glass tabletop**



ED / GUGLIELMO BERCHICCI



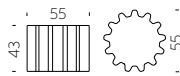
WE MAKE FURNITURE

# FURNITURE YOU MAY ALSO LIKE



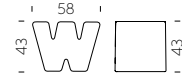
## GEAR

design ANASTASIA IVANYUK  
category stool/coffee table  
material polyethylene



## DOUBLE U

design KAZUKO OKAMOTO  
category stool  
material polyethylene



## CUBO POUF

design SLIDE STUDIO  
category stool/coffee table  
material polyethylene



## TOY

design PROSPERO RASULO  
category coffee table  
material polyethylene







## TAO

design GUGLIELMO BERCHICCI  
category coffee table  
material polyethylene  
glass tabletop



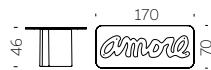
## SLOTH

design KARIM RASHID  
category coffee table  
material polyurethane



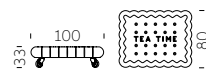
## AMORE TABLE

design GIÒ COLONNA ROMANO  
category coffee table  
material polyethylene  
glass tabletop



## TEA TIME

design GIANNI ARNAUDO  
category coffee table  
material polyethylene  
nr.4 wheels



## TARTA + TARTA LOW TABLE

design ROBERTO PAOLI  
category low chair + coffee table  
material polyurethane  
beech wood legs



## TIC TAC

design MARCO ACERBIS  
category chaise-longue  
material polyethylene



*We Make*  
LIGHTS





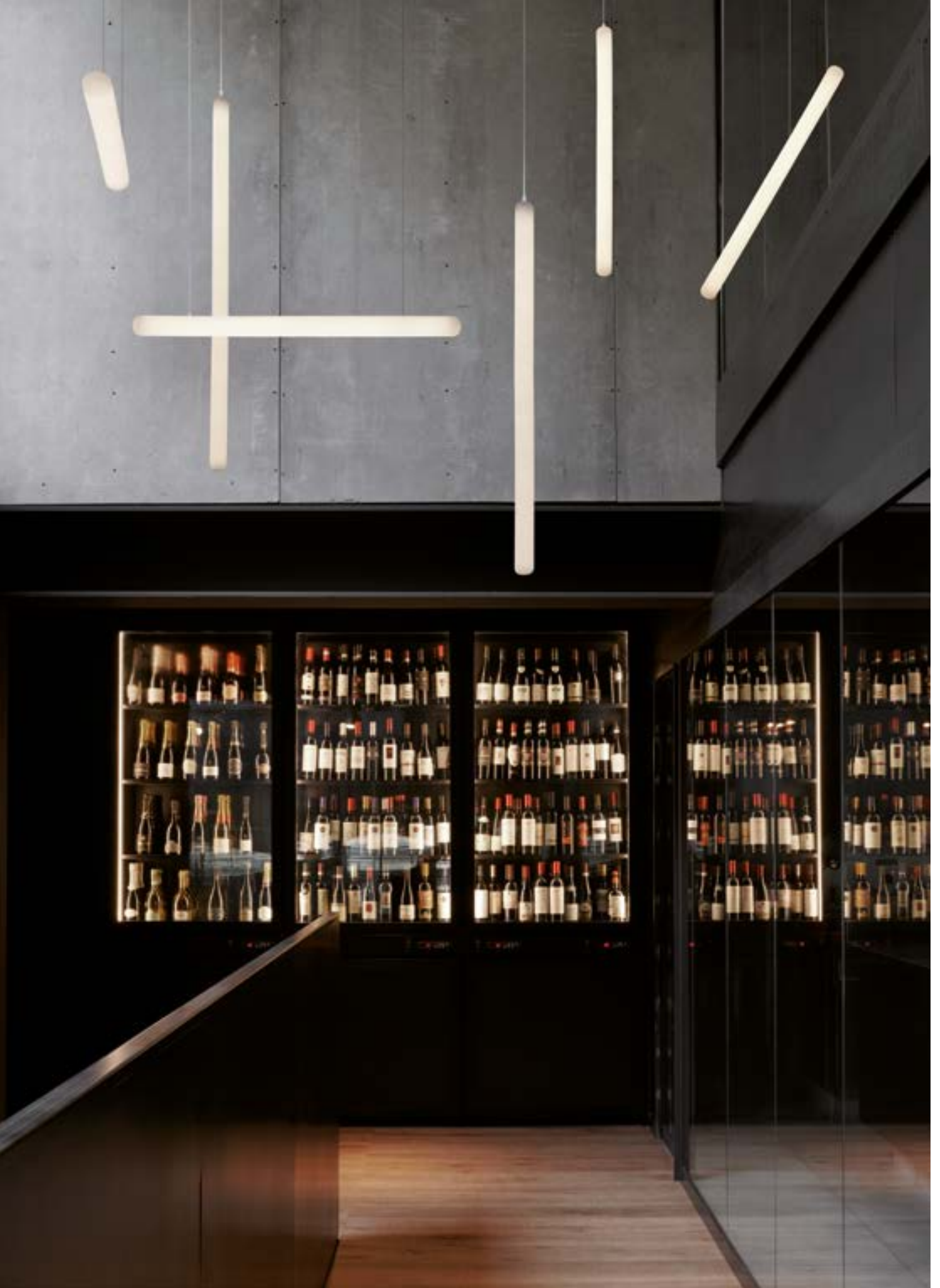
# STILETTO COLLECTION

Design  
ROBERTO PAOLI



Collection  
STILETTO X  
STILETTO Y  
STILETTO APPLIQUE  
STILETTO SHARD

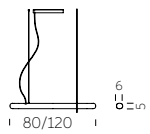
Stiletto is a hanging lamp with an essential line, ideal for contemporary and indoor settings that require a scenographic lighting. Available in two different dimensions, both in vertical and horizontal orientation. Thanks to its minimal design, its homogeneous light and the possibility of infinite combinations.



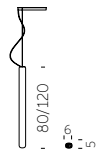


# STILETTO COLLECTION

material POLYETHYLENE



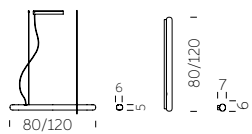
STILETTO X



STILETTO Y



STILETTO APPLIQUE



STILETTO SHARD



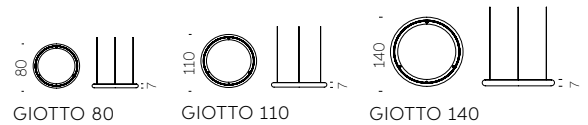
STILETTO COLLECTION / ROBERTO PAOLI

WE MAKE LIGHTS

# GIOTTO

Design  
ROBERTO PAOLI

category hanging/wall/ceiling lamp  
material polyethylene



The perfect circle exists and Roberto Paoli made it in polyethylene. Giotto is a luminous hanging ring with three different LED lighting temperature, so it is perfect for every use: home, hospitality or workspace.





GIOTTO / ROBERTO PAOLI

WE MAKE LIGHTS



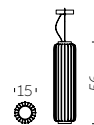
Giotto is a lamp with an essential geometry that can be used individually or in countless compositions. The combination of several Giotto hanging lamps can light up large areas with a strong personality. Available also as wall/ceiling lamp version.



# CORDIALE LUMIÈRE

Design  
ROBERTO PAOLI

category hanging lamp  
material polyethylene  
brass covers

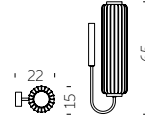


# CORDIALE APPLIQUE

Design  
ROBERTO PAOLI



category wall lamp  
material polyethylene  
brass covers



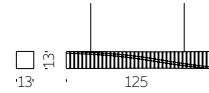
CORDIALE APPLIQUE / ROBERTO PAOLI

WE MAKE LIGHTS

# SPIN

Design  
FABIO NOVEMBRE

category hanging/wall/ceiling lamp  
material polyethylene



“Sometimes a spin is needed to make a pure shape vibrate. Spin hanging/wall lamp comes from the twist of a square-based parallelepiped element. The modularity allows obtaining long and sinuous elements that can vary, in terms of composition, based on the aggregation method”.



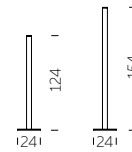
SPIN / FABIO NOVEMBRE

WE MAKE LIGHTS

# FLUX COLLECTION

Design  
GIÒ COLONNA ROMANO

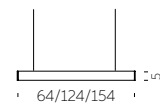
category floor/hanging lamp  
material methacrylate



FLUX



FLUX HANGING



FLUX UP



“Silky touch, warm light and an essential design. Flux is a discreet and contemporary lamps family: their essential shape characterizes both the hanging lamp and the floor lamp. The methacrylate creates a silky-effect texture that covers the whole surface”.

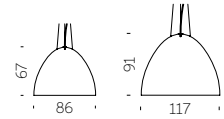




# PLUME

Design  
GIÒ COLONNA ROMANO

category hanging lamp  
material fiberglass



PLUME / GIÒ COLONNA ROMANO

WE MAKE LIGHTS



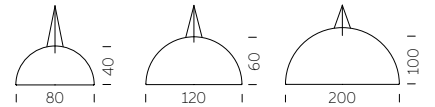
# ELIOS

Design  
GIÒ COLONNA ROMANO

“Light, essential and thin: Elios and Plume were born from the continuous research of material: the fiberglass process creates a family of hanging lamps that becomes richer thanks to the contrast between the external side of the lamp, in different colours, and the brightness of the inner side”.

*Giò Colonna Romano*

category **hanging lamp**  
material **fiberglass**



ELIOS / GIÒ COLONNA ROMANO



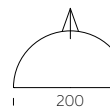
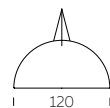
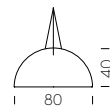
WE MAKE LIGHTS

# CUPOLE

Design  
GIÒ COLONNA ROMANO



category **hanging lamp**  
material **polyethylene**



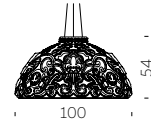
Cupole hanging lamp has got an ordinary shape but extraordinary dimensions. Its half-sphere shape is suitable for every indoor settings: Cupole can give a touch of strong personality to every anonymous area. Available in three different dimensions, it gives a playful touch in standard colours, or to be elegant and sophisticated in the two-coloured lacquered version.



# DAME OF LOVE

Design  
MORO & PIGATTI

category hanging lamp  
material polyethylene



DAME OF LOVE / MORO & PIGATTI

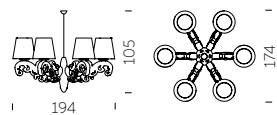
WE MAKE LIGHTS



# CROWN OF LOVE

Design  
MORO & PIGATTI

category hanging lamp  
material polyethylene



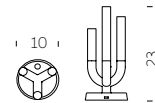
CROWN OF LOVE / MORO & PIGATTI

WE MAKE LIGHTS

# LUNA

Design  
ANTONIO LANZILLO & PARTNERS

category table lamp  
material plexiglass  
metal base



“Luna is a romantic light, full of emotion, that evokes classic scenarios. A warm, poetic lamp with a technological heart: rechargeable, dimmable, soft touch.”



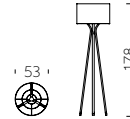


# ALLURE

ALLURE / ILARIA MARELLI

Design  
ILARIA MARELLI

category floor lamp  
material polyester  
galvanized metal base

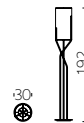


WE MAKE LIGHTS

# AURA

Design  
ILARIA MARELLI

category floor lamp  
material polyester  
galvanized metal base



AURA / ILARIA MARELLI

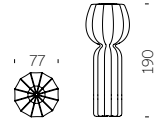
WE MAKE LIGHTS



# CUCUN

Design  
LORENZA BOZZOLI

category floor lamp  
material polyethylene



Inspired by the simple shapes of flowers, vegetables and bulbs, Cucun floor lamp merges perfectly with the Nature around it. Thanks to its strong decorative presence, it is ideal to furnish both domestic and commercial areas, both for indoor and outdoor spaces.



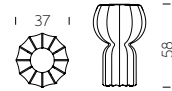




# PUPA

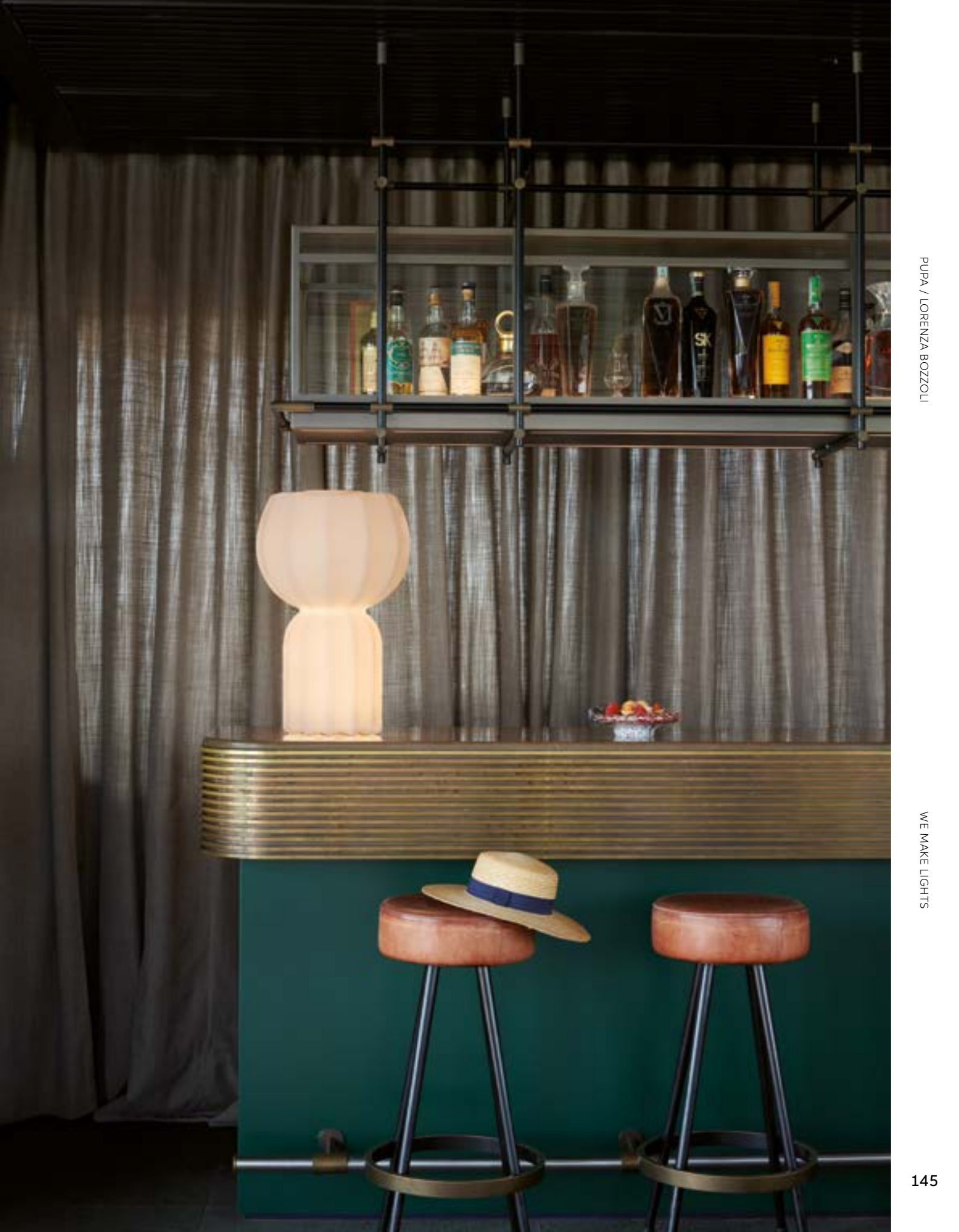
Design  
LORENZA BOZZOLI

category **table lamp**  
material **polyethylene**



A sheet of ancient Japanese paper inspiration, which covers the whole surface, creates soft light effects. The particular structure, with its ribs, is a tribute to some icons of Italian design of the last century. Pupa table lamp is perfect for warm and refined atmospheres and contemporary indoor settings.

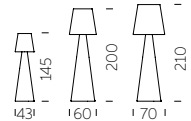




# PIVOT

Design  
SLIDE STUDIO

category **floor lamp**  
material **polyethylene**



The linear design of Pivot collection is the result of the perfect mix between the conical shape of the base and the classic shape of the lampshade. The main characteristic of Pivot is the texture on its lampshade, which reminds of the classical arabesque motif: available in three different dimensions.

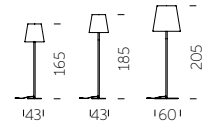


# ALI BABA STEEL

Design  
SLIDE STUDIO

ALI BABA STEEL / SLIDE STUDIO

category floor lamp  
material polyethylene  
galvanized metal base

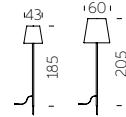


WE MAKE LIGHTS

# FIACCOLA ALI BABA

Design  
SLIDE STUDIO

category floor lamp  
material polyethylene  
galvanized metal base



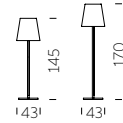
FIACCOLA ALI BABA / SLIDE STUDIO

WE MAKE LIGHTS

# ALI BABA WOOD

Design  
SLIDE STUDIO

category floor lamp  
material polyethylene  
wood beech base

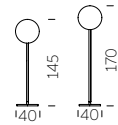


# GLOBO WOOD

Design  
SLIDE STUDIO



category floor lamp  
material polyethylene  
wood beech base



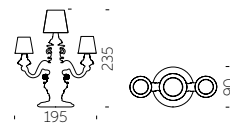
GLOBO WOOD / SLIDE STUDIO

WE MAKE LIGHTS

# KING OF LOVE

Design  
MORO & PIGATTI

category floor lamp  
material polyethylene



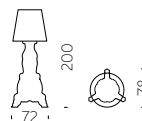


# MADAME OF LOVE

Design  
MORO & PIGATTI

An Italian baroque classic, the abat-jour, is reinterpreted in pop and ironic style: Madame of Love is a floor lamp that reminds the same shape of the abat-jour, but it is bigger than the classic lamp and it has got a contemporary base made in polyethylene.

category **floor lamp**  
material **polyethylene**



MADAME OF LOVE / MORO & PIGATTI

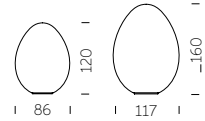


WE MAKE LIGHTS

# DINO

Design  
SLIDE STUDIO

category floor lamp  
material polyethylene

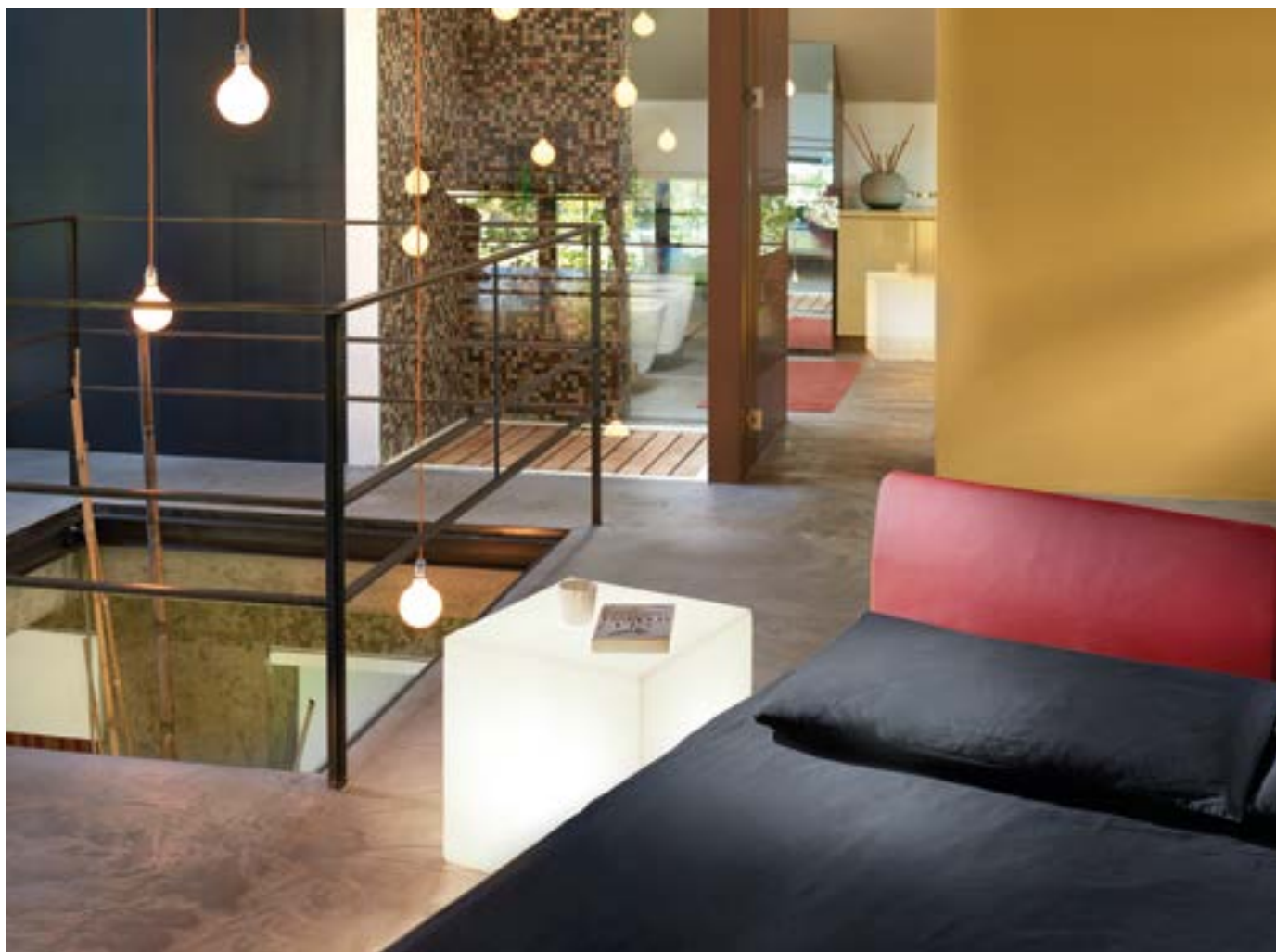
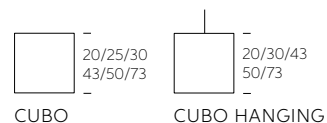




# CUBO COLLECTION

Design  
SLIDE STUDIO

category **table/floor/hanging lamp**  
material **polyethylene**



The sweet and sensual light of Cubo collection is able to create a lounge and elegant setting in every indoor and outdoor contract project, so Cubo becomes one of the Slide bestsellers.



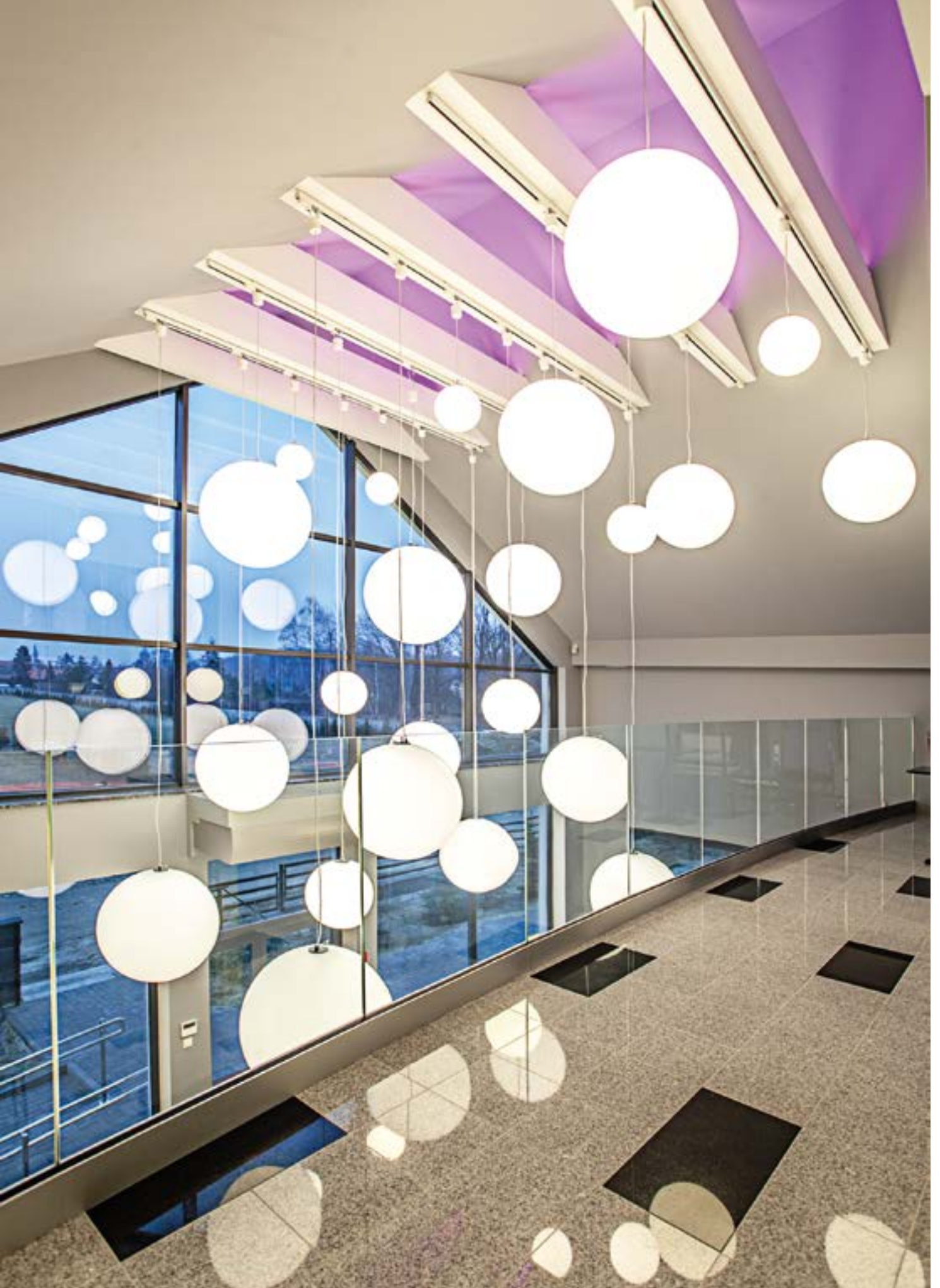
# GLOBO COLLECTION

Design  
SLIDE STUDIO

Collection  
GLOBO  
GLOBO HANGING  
GLOBO TIGE  
ACQUAGLOBO



The simplicity of a luminous sphere that can create amazing and elegant atmospheres in indoor and outdoor settings. Globo collection is a numerous family: it is available in different dimensions from 25cm up to 2mt diameter, and in different version as table, floor, wall/ceiling, hanging and floating lamps.

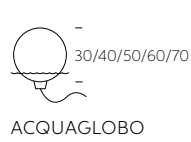
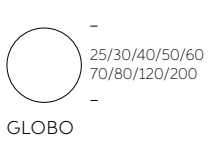






# GLOBO COLLECTION

material POLYETHYLENE



GLOBO COLLECTION / SLIDE STUDIO

WE MAKE LIGHTS

# MINERAL COLLECTION

Design  
SLIDE STUDIO

Collection  
MINERAL  
MINERAL STAND  
MINERAL HANGING  
MINERAL TIGE



The luxurious marble finishes, with grey and red veinings, characterize the Mineral collection. The marbled texture made the light delicate and welcoming in table, floor and hanging versions. For classy indoor spaces, simple but at the same time unforgettable.



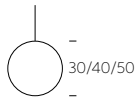


# MINERAL COLLECTION

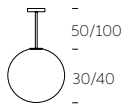
material POLYETHYLENE



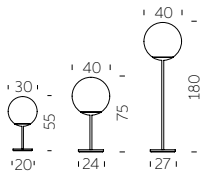
MINERAL



MINERAL HANGING



MINERAL TIGE



MINERAL STAND



MINERAL COLLECTION / SLIDE STUDIO

WE MAKE LIGHTS

# MURANO COLLECTION

Design  
SLIDE STUDIO



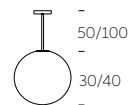
category table/hanging/ceiling lamp  
material SAN



MURANO

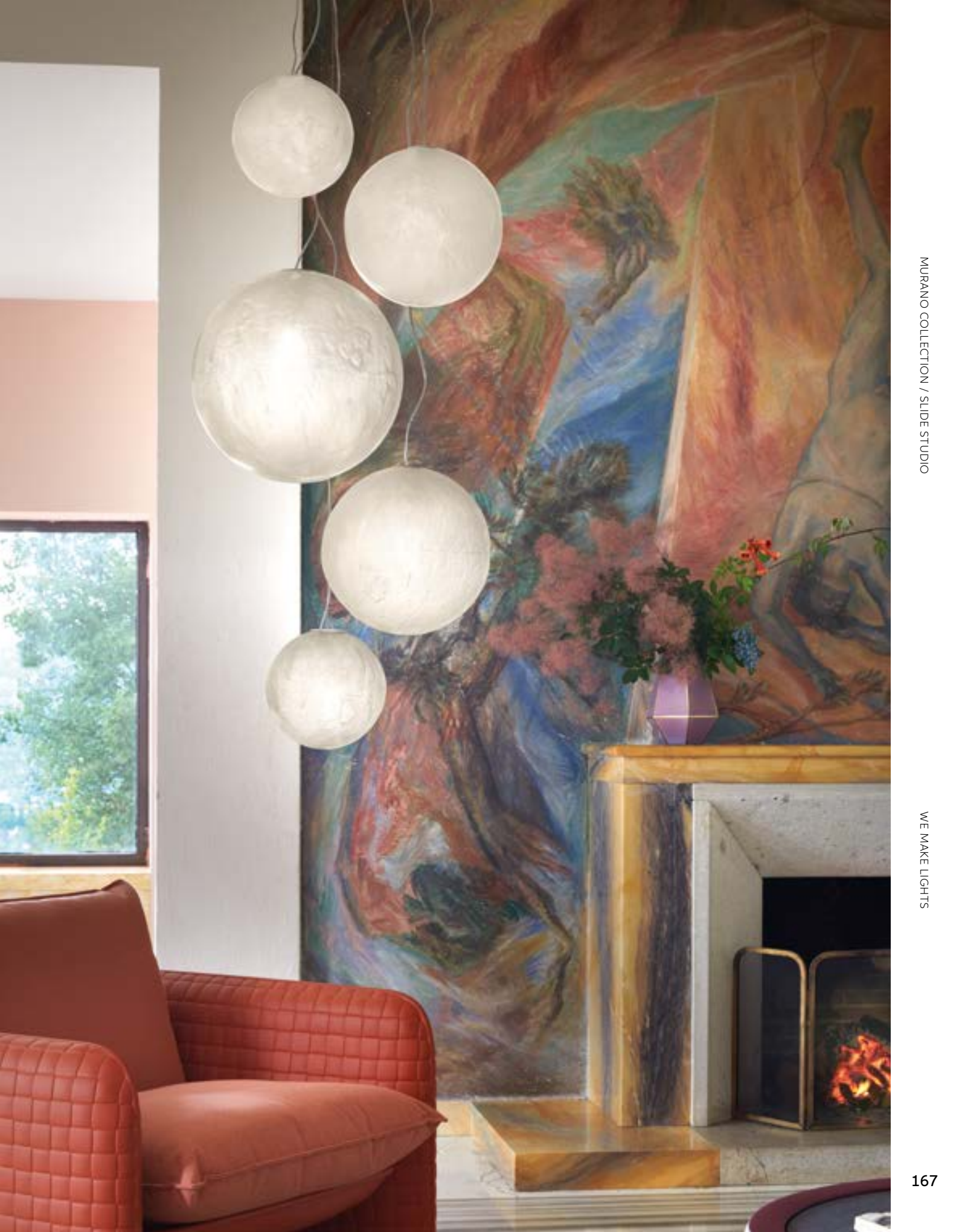


MURANO HANGING



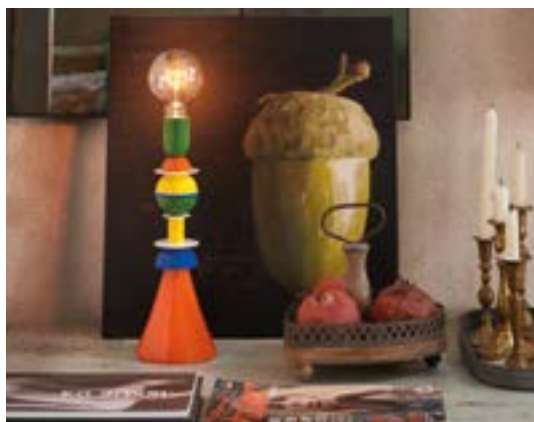
MURANO TIGE

From the ancient tradition of master glassmakers, Murano is a hanging lamp that, best of all, matches industrial series production with the wonderful imperfections of craftsmanship. With a special blend of plastic material, Murano has the iridescence of glass and each piece is unique, thanks to manual finishing. Warm light radiates uniformly thanks to the transparency of the material.



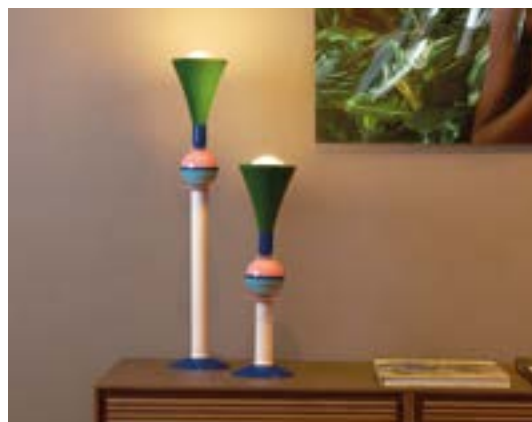
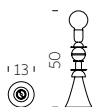
# LIGHTS

## YOU MAY ALSO LIKE



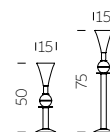
### OTELLO

design GIÒ COLONNA ROMANO  
category **table lamp**  
material **aluminium**



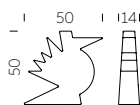
### CARMEN

design GIÒ COLONNA ROMANO  
category **table lamp**  
material **aluminium**



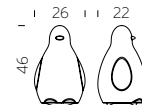
### HERE

design ALESSANDRO MENDINI  
category **table lamp**  
material **polyethylene**



### KOKÒ

design GIÒ COLONNA ROMANO  
category **table lamp**  
material **polyethylene**

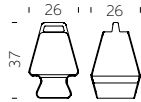






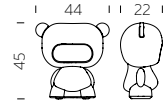
## PRÊT-À-PORTER

design ANTONIO NORERO  
category table lamp  
material polyethylene



## PURE

design LAB81  
category table lamp  
material polyethylene



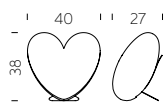
## BUBO

design FABIO ROTELLA  
category table lamp  
material polyethylene



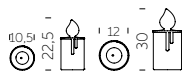
## LOVE

design STEFANO GIOVANNONI  
category table lamp  
material polyethylene  
metal base



## FIAMMETTA + FIAMMA

design ALBERTO GHIRARDELLO  
category table lamp  
material polyethylene



## KOLME + KUUSI

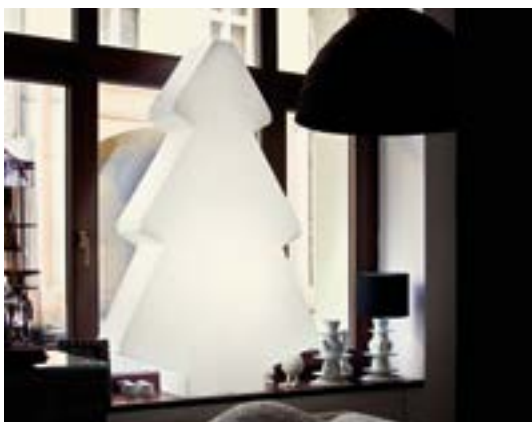
design ROBERTO PAOLI  
category table/floor lamp  
material polyethylene





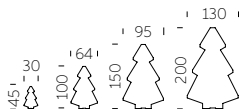
## THERE

design ALESSANDRO MENDINI  
category floor lamp  
material polyethylene



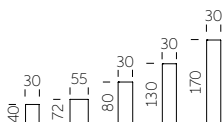
## LIGHTTREE

design LOETIZIA CENSI  
category table/floor lamp  
material polyethylene



## FLUO

design SLIDE STUDIO  
category floor lamp  
material polyethylene



## BIJOUX

design BÜRO FÜR FORM  
category floor/hanging lamp  
material polyethylene



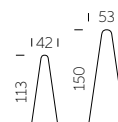
## MANHATTAN

design GIÒ COLONNA ROMANO  
category floor lamp  
material polyethylene



## CONO

design SLIDE STUDIO  
category floor lamp  
material polyethylene





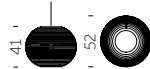
## GLOBO WALL

design SLIDE STUDIO  
category wall/ceiling lamp  
material polyethylene



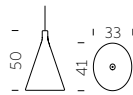
## MOLLY

design SLIDE STUDIO  
category hanging lamp  
material polyethylene



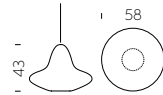
## JUXT

design KARIM RASHID  
category hanging lamp  
material polyethylene



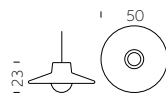
## SUNDAY

design SLIDE STUDIO  
category hanging lamp  
material polyethylene



## ICO

design STUDIOPANG  
category hanging lamp  
material polyethylene



## MESH

design BBMDS  
category hanging lamp  
material polyethylene



*We Make*  
HOSPITALITY





# CORDIALE COLLECTION

Design  
ROBERTO PAOLI

Collection  
CORDIALE  
CORDIALE CORNER  
CORDIALE WELCOME



“The function becomes the first step for the creation of the shape in the Cordiale bar counter. Cordiale can give a sweetly retro style to a contemporary space. The geometries that make up the project, as well as the surface finishes, lead back to materials such as stone or hand-made wood essences”.



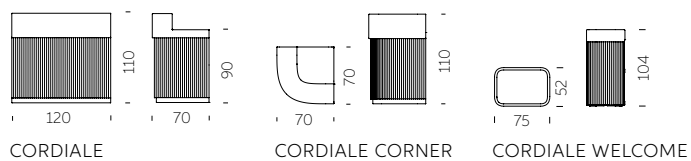






## CORDIALE COLLECTION

material POLYETHYLENE





# BREAK COLLECTION

Design  
SLIDE STUDIO

Collection  
BREAK BAR  
BREAK LINE  
BREAK CORNER  
ICE BAR



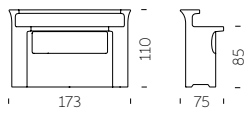
The magic of the light and the simplicity of polyethylene: the Break collection is the perfect combination for events, restaurants and lounge bars. The luminous bar counters light up big areas and create magical and unforgettable moments for all the guests.



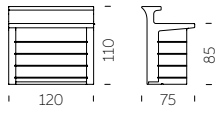


## BREAK COLLECTION

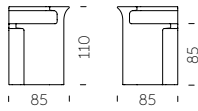
material POLYETHYLENE



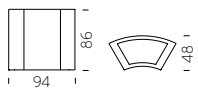
BREAK BAR



BREAK LINE



BREAK CORNER



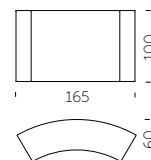
ICE BAR



# SNACK BAR

Design  
SLIDE STUDIO

category **bar counter**  
material **polyethylene**



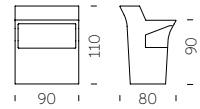


# JUMBO COLLECTION

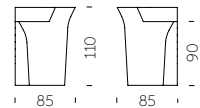
Design  
JORGE NAJERA

The first real success of Slide, Jumbo Bar is the ancestor of the whole production of luminous bar counters. Jumbo Bar and Jumbo Corner are suitable to create unique events, both in indoor and outdoor spaces.

category **bar counter**  
material **polyethylene**



JUMBO BAR



JUMBO CORNER

JUMBO COLLECTION / JORGE NAJERA



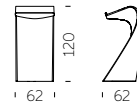
WE MAKE HOSPITALITY

# SWISH

SWISH / KARIM RASHID

Design  
KARIM RASHID

category lectern  
material polyethylene



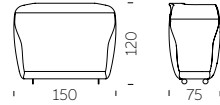
WE MAKE HOSPITALITY

# ROLLER BAR

Design  
GERD VAN CAUTEREN



category **bar counter**  
material **polyethylene**



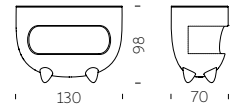
ROLLER BAR / GERD VAN CAUTEREN

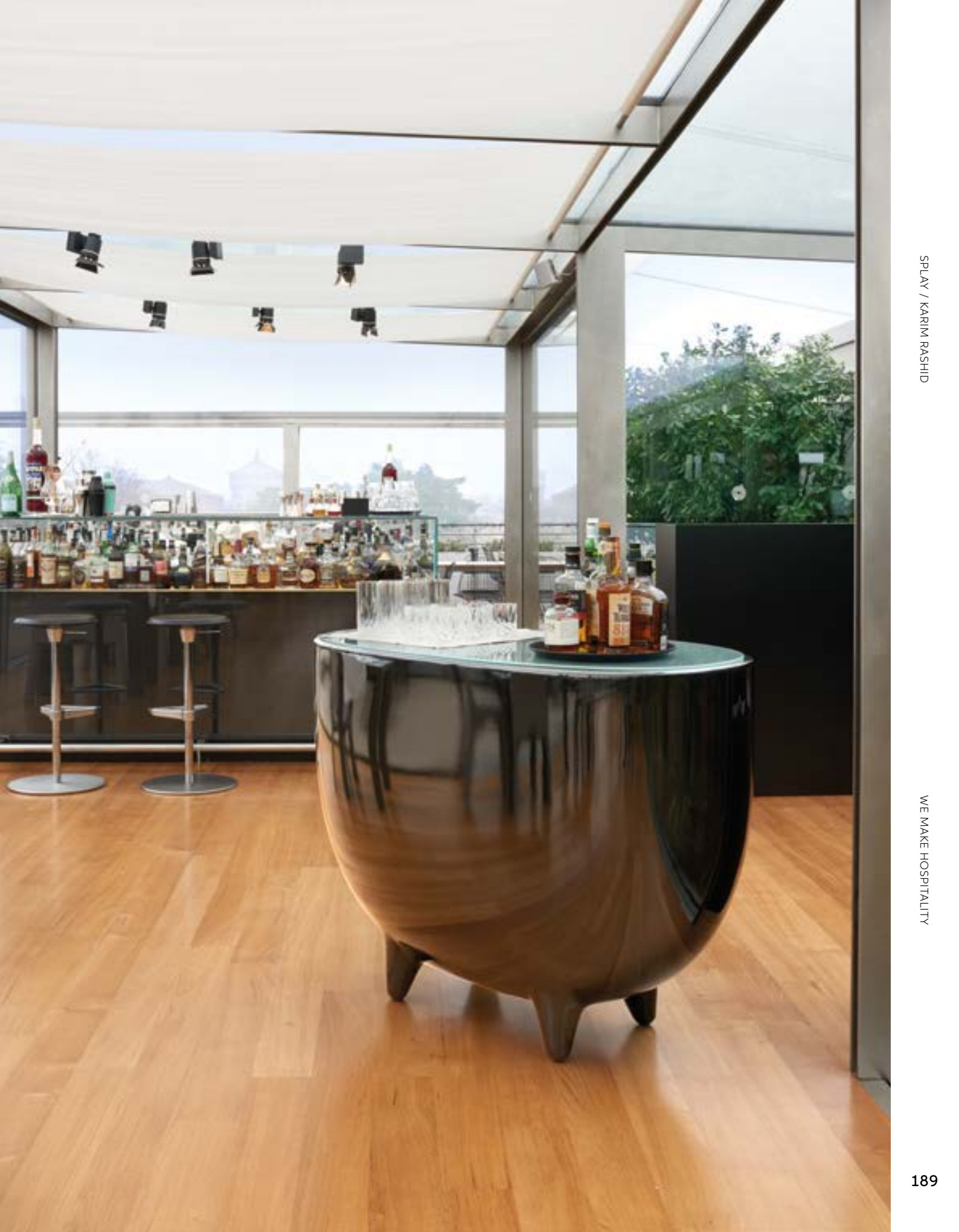
WE MAKE HOSPITALITY

# SPLAY

Design  
KARIM RASHID

category **bar counter**  
material **polyethylene**

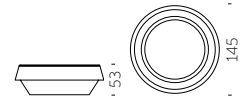




# GIÒ POUF

Design  
SLIDE STUDIO

category pouf  
material polyethylene  
ecoleather cushion



GIÒ POUF / SLIDE STUDIO

WE MAKE HOSPITALITY

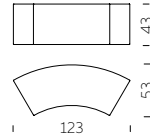


# SNAKE

Design  
SLIDE STUDIO

The perfect match between aesthetic and functionality: Snake designs and organizes the spaces with elegance and essentiality. Luminous and modular, Snake creates dreamy atmosphere during special events or in contemporary contract projects.

category **modular seat**  
material **polyethylene**



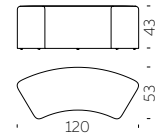
# SOFT SNAKE

SOFT SNAKE / SLIDE STUDIO

Soft Snake and Soft Cubo are an even more comfortable reinterpretation of Slide bestsellers Snake and Cubo. Made in soft polyurethane, they can perfectly match with their luminous version in polyethylene, in both indoor and outdoor settings.

Design  
SLIDE STUDIO

category **soft modular seat**  
material **soft polyurethane**



WE MAKE HOSPITALITY



# SOFT CUBO

Design  
SLIDE STUDIO

category **soft stool**  
material **soft polyurethane**







SOFT CUBO / SLIDE STUDIO

WE MAKE HOSPITALITY

# PINT

PINT / SLIDE STUDIO

Pint is an extremely elegant and linear luminous high table. The conical shape of Pint matches perfectly with the round tempered glass top, which gives a more sophisticated look to events and contract.

Design  
SLIDE STUDIO

category **table**  
material **polyethylene**  
**tempered glass tabletop**



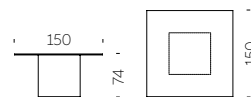
WE MAKE HOSPITALITY



# SQUARE

Design  
SLIDE STUDIO

category **table**  
material **polyethylene**  
**tempered glass tabletop**



SQUARE / SLIDE STUDIO

WE MAKE HOSPITALITY



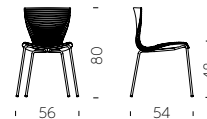
# GLORIA

GLORIA / MARC SADLER

WE MAKE HOSPITALITY

Design  
MARC SADLER

category chair  
material polypropylene  
steel chassis



# GLORIA MEETING

Design  
MARC SADLER



category chair  
material polypropylene  
steel chasis



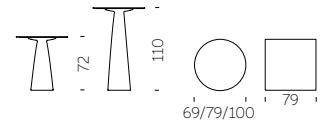
GLORIA MEETING / MARC SADLER

WE MAKE HOSPITALITY

# HOPLÀ

Design  
MARC SADLER

category **table**  
material **polyethylene**  
**hpl tabletop**



Informal and refined at the same time, Hoplà is a family of stylish tables designed by Marc Sadler. Everyone can create their own perfect Hoplà table: you can choose from various heights and different shapes of HPL tops.





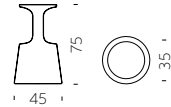
# DRINK

DRINK / JORGE NAJERA

WE MAKE HOSPITALITY

Design  
JORGE NAJERA

category **high stool**  
material **polyethylene**

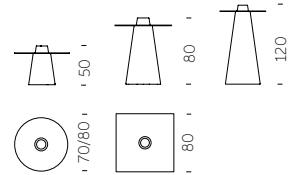


# PEAK

Design  
AKSU & SUARDI STUDIO

The main reason for the success of Peak is its eccentric design: the simple and conical base shape ends with a hole that can become a bottle rack or a romantic flowerpot. The fancy base of Peak is available in different heights.

category **table**  
material **polyethylene**  
**tempered glass tabletop**



PEAK / AKSU & SUARDI STUDIO

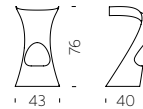


WE MAKE HOSPITALITY

# KONCORD

Design  
KARIM RASHID

category **high stool**  
material **polyethylene**



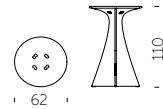
"I love plastic. I always have and always will. Plastic has afforded a warm, soft, malleable, flexible, comfortable, lightweight democratic landscape reaped with innovation. And with that I made Konkord, an entirely unique shape that is only made possible by plastic. The resulting form of movement speaks about our dynamic digital age".



# JET

Design  
KARIM RASHID

category **table**  
material **polyethylene**



Thanks to the 10th anniversary of the iconic Konkord stool designed by Karim Rashid, Slide creates the perfect partner for it, the Jet high table. Its sinuous shape enhances the silhouette of the stool and merges with it. The top is decorated with symbols that the designer adores.



# AMÉLIE COLLECTION

Design  
ITALO PERTICHINI

Collection  
AMÉLIE  
AMÉLIE DUETTO  
AMÉLIE PANCHETTA  
AMÉLIE SGABELLO  
AMÉLIE SIT UP  
AMÉLIE UP



“The project idea derives from the careful observation of what is around us. Modify the existing in order to adapt it to new needs. The conical shape means stability and stackability par excellence. The unnecessary was removed, so Amélie was born: solid, stable, stackable”.





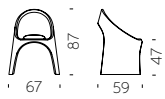




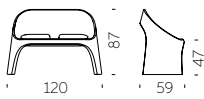


## AMÉLIE COLLECTION

material POLYETHYLENE



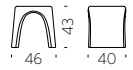
AMÉLIE



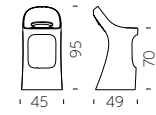
AMÉLIE DUETTO



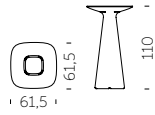
AMÉLIE PANCHETTA



AMÉLIE SGABELLO



AMÉLIE SIT UP



AMÉLIE UP

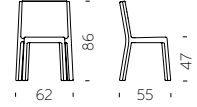


# Q4

Q4 / JORGE NAJERA

Design  
**JORGE NAJERA**

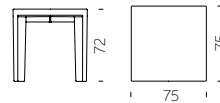
category **chair**  
material **polyethylene**



WE MAKE HOSPITALITY

Design  
GIÒ COLONNA ROMANO

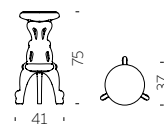
category **table**  
material **polyethylene**  
**tempered glass tabletop**



# MISTER OF LOVE

Design  
MORO & PIGATTI

category **high stool**  
material **polyethylene**



MISTER OF LOVE / MORO & PIGATTI

WE MAKE HOSPITALITY

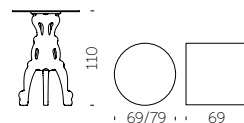


# MASTER OF LOVE

Design  
MORO & PIGATTI



category table  
material polyethylene  
hpl tabletop



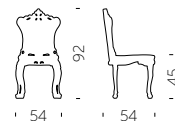
MASTER OF LOVE / MORO & PIGATTI

WE MAKE HOSPITALITY

# PRINCESS OF LOVE

Design  
MORO & PIGATTI

category chair  
material polyethylene



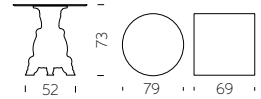
PRINCESS OF LOVE / MORO & PIGATTI

WE MAKE HOSPITALITY

# LORD OF LOVE

Design  
MORO & PIGATTI

category table  
material polyethylene  
hpl tabletop



# SIR OF LOVE

Design  
MORO & PIGATTI

category table  
material polyethylene  
glass/hpl tabletop



With its royal and majestic presence, Sir of Love table turns every evening into a real black-tie event. Its four arched legs are rich in details, as the typical Italian baroque style, but it is made in polyethylene, a contemporary and pop material.



# HOSPITALITY

## YOU MAY ALSO LIKE



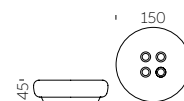
### SUMMERTIME

design **GIÒ COLONNA ROMANO**  
category **pouf**  
material **polyethylene**



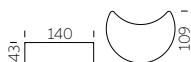
### BOT ONE

design **FABIO DELLA FIORENTINA**  
category **pouf**  
material **polyethylene**



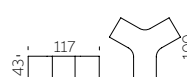
### MOON

design **ALAIN HADIFE**  
category **pouf**  
material **polyethylene**



### YPSILON

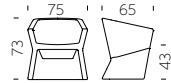
design **SLIDE STUDIO**  
category **modular seat**  
material **polyethylene**





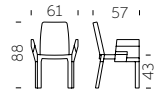
## EXOFA

design **JORGE NAJERA**  
category **armchair**  
material **polyethylene**



## DOUBLIX

design **STIRUM DESIGN**  
category **chair**  
material **polyethylene**



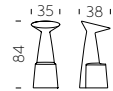
## LAZY BONES

design **BARNABY GUNNING**  
category **high stool**  
material **polyethylene**



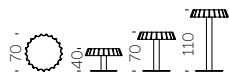
## VOILÀ

design **MARC SADLER**  
category **high stool**  
material **polyethylene**



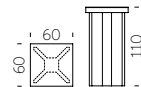
## FIZZ

design **GIANNI ARNAUDO**  
category **table**  
material **polyethylene**  
**galvanized metal base**



## X2

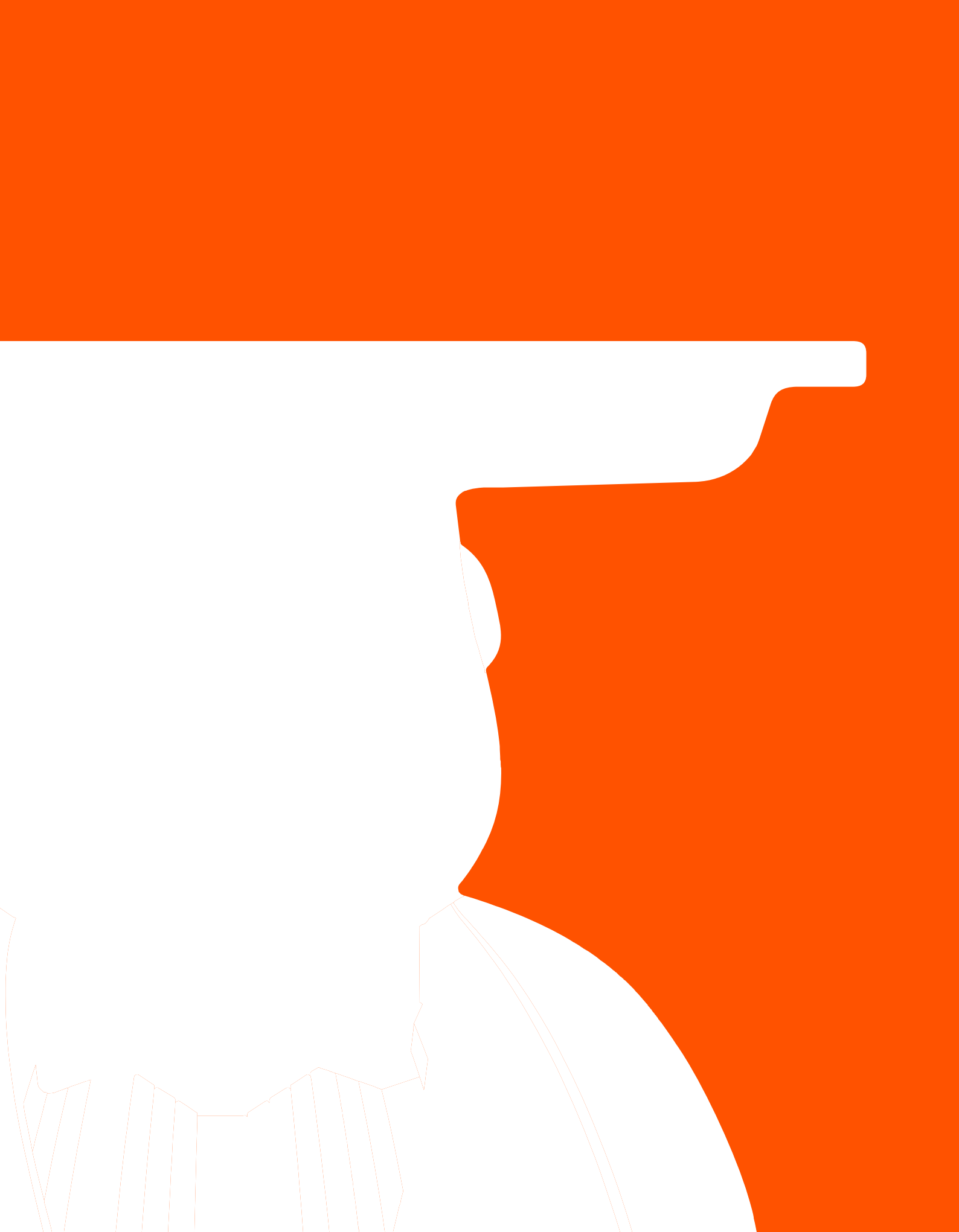
design **SLIDE STUDIO**  
category **table**  
material **polyethylene**



*We Make*  
COMPLEMENTS



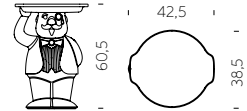




# AMBROGIO

Design  
FAVARETTO&PARTNERS

category **servant table**  
material **polyethylene**  
wood removable tray



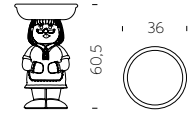
“Ambrogio and Amanda, with a wink to green side, are nice and attractive items, but at the same time they are eco-friendly. Thanks to Ambrogio and Amanda, Design becomes democratic, ethic and ideal to improve our planet.”



# AMANDA

Design  
FAVARETTO&PARTNERS

category servant table  
material polyethylene  
wood removable tray





# AMORE

Design  
GIÒ COLONNA ROMANO

category **bench**  
material **polyethylene**



“Amore bench represents the synthesis of the main characteristics of SLIDE production. Love (“amore” in Italian) for the colour, love for the original design, love for the unusual shapes. This bench is a sculpture and a positive hymn to love, which should be present in all its shapes inside every home”.



# WOW

Design  
KAZUKO OKAMOTO

category **bench**  
material **polyethylene**



The calligraphic and palindromic WOW creates amazement and happiness in every kind of settings. This pop seat pays a tribute to the comics culture in Japan, where Kazuko Okamoto was born.



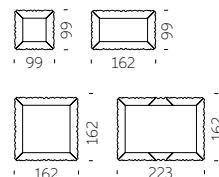


# FRAME OF LOVE

Design  
MORO & PIGATTI



category **frame**  
material **polyethylene**



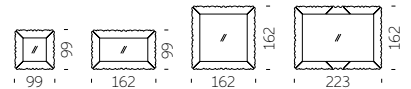
Vintage and sophisticated, Frame of Love is ideal in every kind of settings, both indoor and outdoor, both for domestic rooms or contract world. Thanks to its different dimensions, it is possible to create different compositions with frames in different colours or dimensions.



# MIRROR OF LOVE

Design  
MORO & PIGATTI

category **mirror**  
material **polyethylene**  
**mirror**



Mirror of Love is the perfect design object to irreverent and contemporary princesses and princes. Mirror of Love is available in four different dimensions, with the same strong personality.



MIRROR OF LOVE / MORO & PIGATTI

WE MAKE COMPLIMENTS

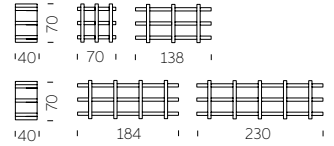
# BOOKY

BOOKY / GIÒ COLONNA ROMANO

WE MAKE COMPLEMENTS

Design  
GIÒ COLONNA ROMANO

category **bookcase**  
material **polyethylene**

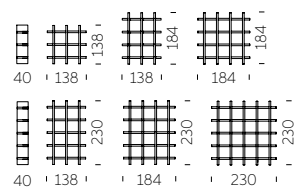


# MYBOOK

Design  
GIÒ COLONNA ROMANO



category **bookcase**  
material **polyethylene**



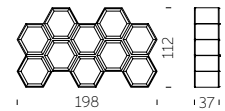
MYBOOK / GIÒ COLONNA ROMANO

WE MAKE COMPLEMENTS

# HEXA

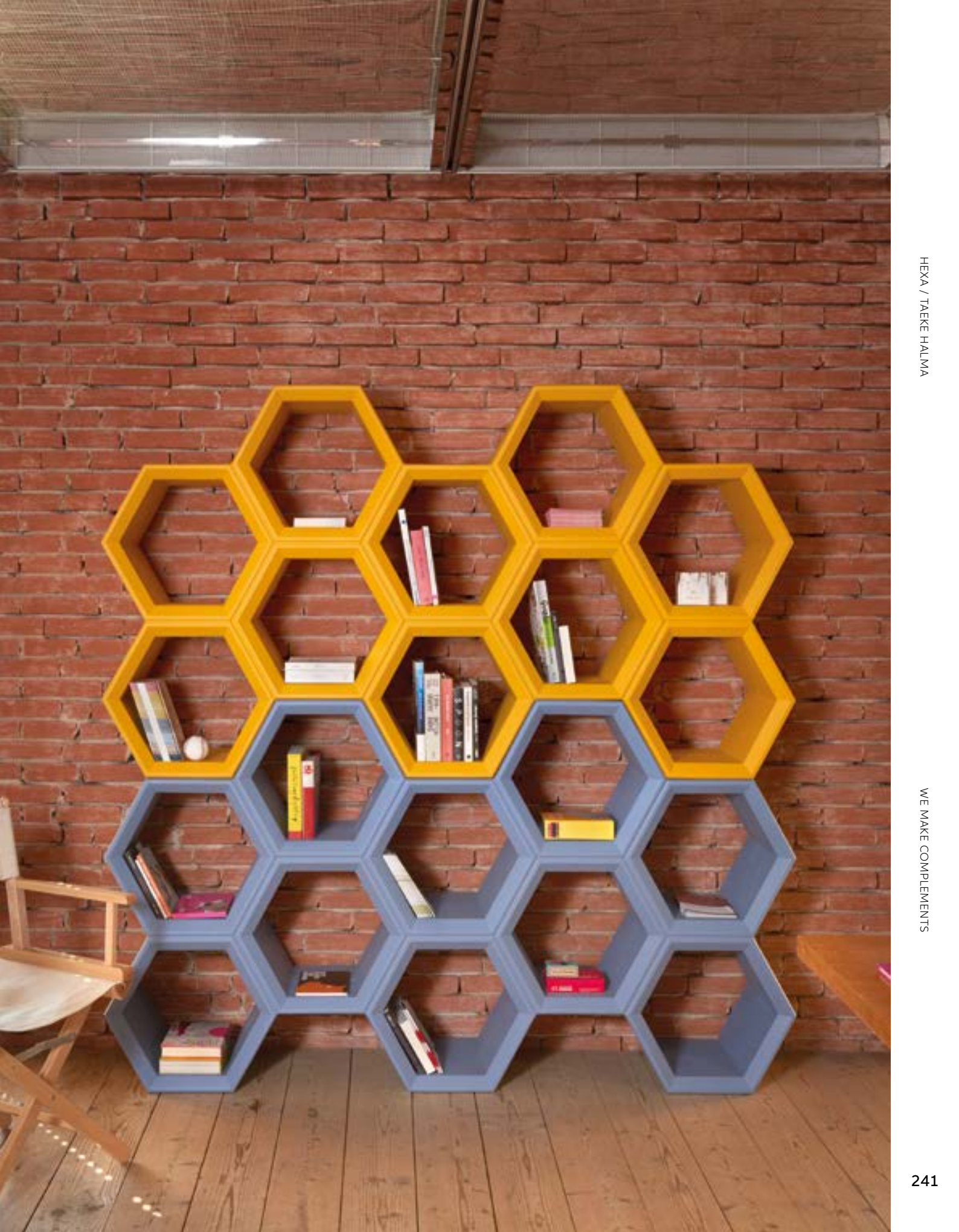
Design  
TAEKE HALMA

category **bookcase**  
material **polyethylene**



“In the design I tried to create an object that looks playful and light, but it is actually extremely resistant. The hexagonal shape of the individual cells allows the user to personalize each cell, and this will automatically create a rather artistic picture of the various objects as they are not aligned in a strict horizontal fashion”.





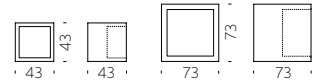
# OPEN CUBE

Design  
SLIDE STUDIO

category **modular display**  
material **polyethylene**

OPEN CUBE / SLIDE STUDIO

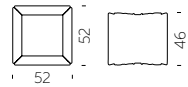
WE MAKE COMPLEMENTS



# JOKER OF LOVE

Design  
MORO & PIGATTI

category **modular display**  
material **polyethylene**



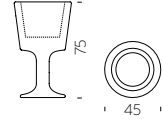
JOKER OF LOVE / MORO & PIGATTI

WE MAKE COMPLEMENTS

# LIGHT DRINK

Design  
JORGE NAJERA

category **bottle rack**  
material **polyethylene**



LIGHT DRINK / JORGE NAJERA

WE MAKE COMPLEMENTS



# KALIMERA

Design  
SLIDE STUDIO

Kalimera is the indispensable co-protagonist to light up cheers with irony and playfulness. Kalimera means "Good morning" in Greek language: thanks to its shape that reminds an eggshell, this bottle rack is ideal to give an informal touch to every indoor and outdoor settings.

category **bottle rack**  
material **polyethylene**



KALIMERA / SLIDE STUDIO

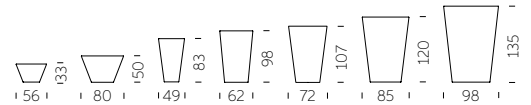


WE MAKE COMPLEMENTS

# X-POT COLLECTION

Design  
SLIDE STUDIO

category pot  
material polyethylene



Colourful and minimal: its double wall and round base make X-Pot ideal to every kind of settings. The different dimensions of pots let X-Pot family give a touch of colour and luminous elegance in private gardens or terraces, or to host the guests in hotels, restaurants or shops.



# Y-POT COLLECTION

Design  
SLIDE STUDIO

category pot  
material polyethylene



Luminous or lacquered, in lively colours or total white:  
Y-Pot is the true character to customize indoor or outdoor  
settings. The square shape and the different dimensions of  
Y-Pot are suitable for contract projects as well as domestic areas.



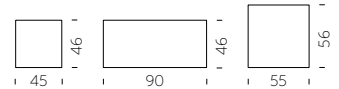


# QUADRA

Design  
GIÒ COLONNA ROMANO

Quadra is a collection of pots that have got a simple and linear shape but the surface is made richer by horizontal streaks, that give facets and movement to the whole product. The simple shape and its elegance make Quadra family ideal in every indoor e outdoor settings.

category **pot**  
material **polyethylene**



QUADRA / GIÒ COLONNA ROMANO

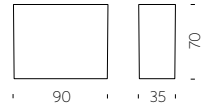
WE MAKE COMPLEMENTS



# QUADRA SEPARÉ

Design  
GIÒ COLONNA ROMANO

category pot/separé  
material polyethylene



QUADRA SEPARÉ / GIÒ COLONNA ROMANO

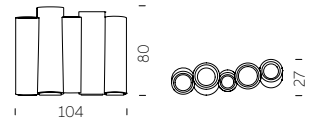


WE MAKE COMPLEMENTS

# BAMBOO

Design  
TOUS LES TROIS

category cachepot/separè  
material polyethylene



Bamboo is a flowerpot, versatile and multiple that meets the most diverse needs in terms of space set-up. This colourful flowerpot is a multi-functional item for indoor and outdoor settings: its high and thin structure let Bamboo to be a flowerpot but also a separè.



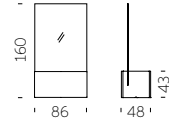
# PRIVÉ

PRIVÉ / SLIDE STUDIO

Privé is a pot with a sinuous design that becomes an elegant divider, when it is completed with panel in plexiglass. Privé is sophisticated but functional at the same time, thanks to its modularity. For this reason it is a perfect option for small and big areas, both indoor and outdoor.

Design  
SLIDE STUDIO

category **pot/separè**  
material **polyethylene**  
**plexiglass**



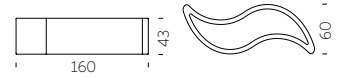
WE MAKE COMPLEMENTS



# WAVE POT

Design  
SLIDE STUDIO

category **pot**  
material **polyethylene**



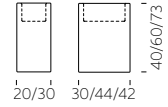
WAVE POT / SLIDE STUDIO

WE MAKE COMPLEMENTS

# BASE POT

Design  
SLIDE STUDIO

category pot  
material polyethylene



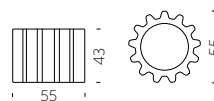


# GEAR POT

Design  
ANASTASIA IVANYUK

Gear Pot is inspired by the typical shape of a mechanical gear. It is modular: many Gear Pot can be put on top of or beside each other, interlocking like a real gear, to create playful and colourful compositions, turning any space into a unique setting.

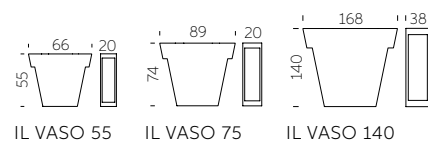
category **pot**  
material **polyethylene**



# IL VASO COLLECTION

Design  
GIÒ COLONNA ROMANO

category **pot**  
material **polyethylene**



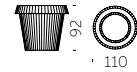
“Versatile and minimalist, Il Vaso uses different dimensional plans to create playful furnishing. The design of Il Vaso is a stylized pot, as a comic book version of the traditional garden item”.



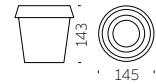
# GIÒ COLLECTION

Design  
GIÒ COLONNA ROMANO

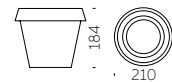
category **pot**  
material **polyethylene**



GIÒ TONDO



BIG GIÒ



GIÒ MONSTER



The typical flowerpot becomes oversize and with a multifaceted surface: these are the main features of Giò Tondo, Big Giò and Giò Monster. The macro reinterpretation of pots of everyday use creates huge pots that immediately draw attention to them.



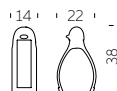
# COMPLEMENTS

## YOU MAY ALSO LIKE



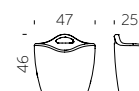
### KOKÒ BOOK

design GIÒ COLONNA ROMANO  
category magazine rack  
material polyethylene



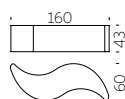
### MAG

design ELI JACOBSON  
category magazine rack  
material polyethylene



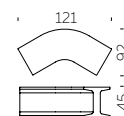
### WAVE

design GIÒ COLONNA ROMANO  
category bench  
material polyethylene



### IRON

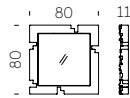
design SEBASTIAN BERGNE  
category modular bench  
material polyethylene





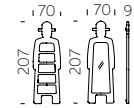
## PIXEL

design **STUDIO TONINO**  
 category **mirror**  
 material **polyethylene**  
 mirror



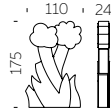
## MR. GIÒ + MR. GIÒ SPECCHIO

design **GIÒ COLONNA ROMANO**  
 category **valet + mirror**  
 material **polyethylene**  
 mirror



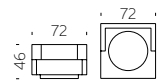
## MYFLOWER

design **FLAVIO LUCCHINI**  
 category **separè**  
 material **polyethylene**



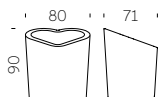
## CUBIC YO

design **GIULIO CAPPELLINI**  
 category **pot**  
 material **polyethylene**  
 nr.4 wheels



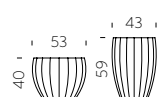
## MON AMOUR

design **ALEX SACCHETTI**  
 category **pot/bottle rack**  
 material **polyethylene**



## STAR

design **SLIDE STUDIO**  
 category **pot**  
 material **polyethylene**



*We Make*

# MATERIALS

The high quality of our products comes from the raw material used, but not just that. Over the years, we have embellished polyethylene with unique processing and innovative accessories.

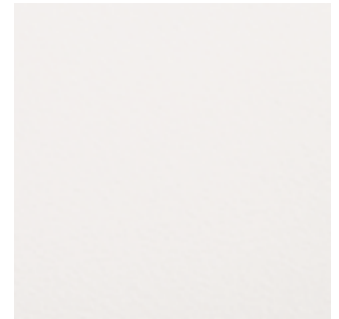




standard polyethylene  
special standard polyethylene  
lighting polyethylene  
special lighting finishing  
lacquered matt/glossy  
soft polyurethane  
textile  
hpl

# STANDARD POLYETHYLENE

The raw material that represents us best: 100% recyclable low-density polyethylene, which in several colours is completely made from recycled plastic. Our 13 standard colours range from the brightest to more neutral ones, so they suit every need.



milky white



jet black



elephant grey



chocolate brown



argil grey



dove grey



powder blue



malva green



lime green



saffron yellow



pumpkin orange



flame red

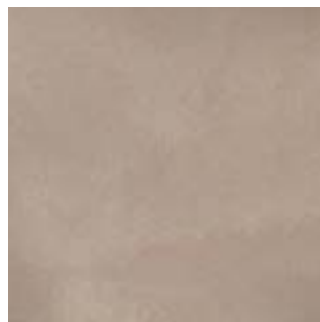


sweet fuchsia



# SPECIAL STANDARD POLYETHYLENE

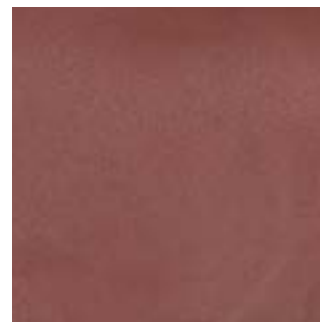
To further enhance certain products, we have created ad hoc colours. Alongside unique processing and shades that give a marble or leather effect to our polyethylene, we have also added new organic or recycled plastic materials.



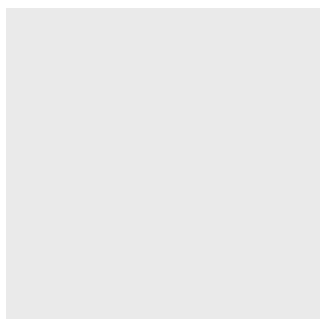
sahara sand



savannah land



namibian desert



coconut grey



grapes blue



avocado green



plum purple

WE MAKE MATERIALS



mahogany leather



saddle leather



granito



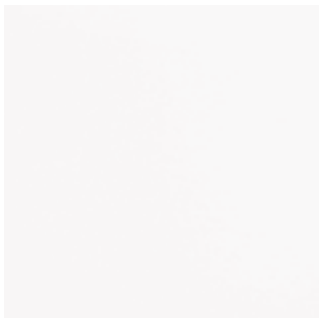
arabescato



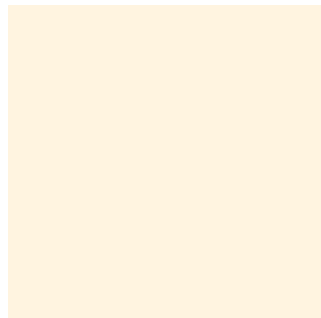
# LIGHTING POLYETHYLENE

Warm colours and inviting atmospheres: our bright colours let the light from the bulb inside shine evenly. Light White and Light Vanilla are perfect for indoors and outdoors, while the other colours are exclusively for indoor environments.

WE MAKE MATERIALS



light white



light vanilla



light blue



light green



light yellow



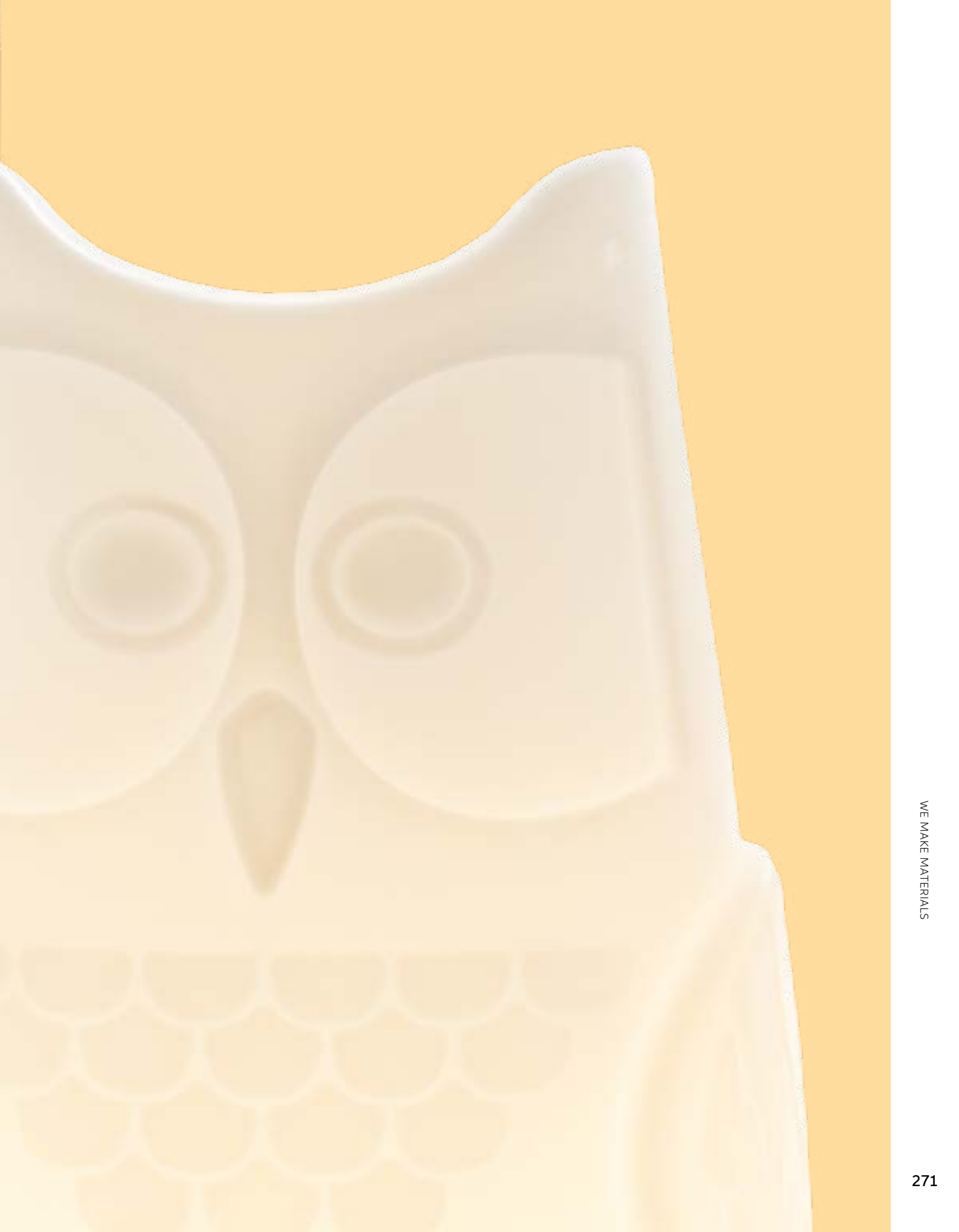
light orange



light red



light pink



# SPECIAL LIGHTING FINISHING

To make our lamps more precious, we offer many different processes. With a mulberry paper or marble effect, special lighting finishes embellish some of our products. Special finishes cover the entire surface of the product, adding soft lighting effects.

WE MAKE MATERIALS



PE grey veinings marble



PE red veinings marble



PE japanese paper



SAN transparent blown glass



METHACRYLATE silky white



FIBERGLASS beige grey



FIBERGLASS sapphire blue



FIBERGLASS rubine red

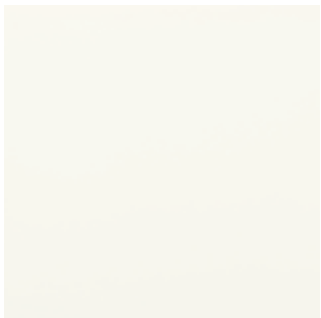




# LACQUERED MATT/GLOSSY

The most luxurious finish of all: lacquered colours can be glossy, matt or metallic and add a touch of glamour to our products. Upon request, you can customise the colour of the product as much as possible, choosing a particular RAL, or using several colours.

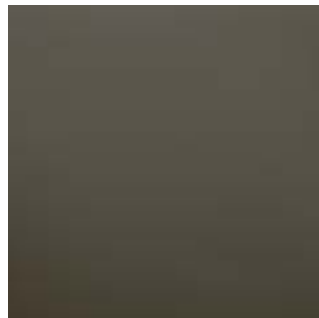
WE MAKE MATERIALS



absolute white



glamour black



vanity grey



charming ivory



supreme red



metallic gold



metallic silver



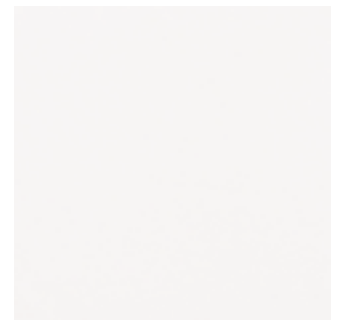
metallic copper



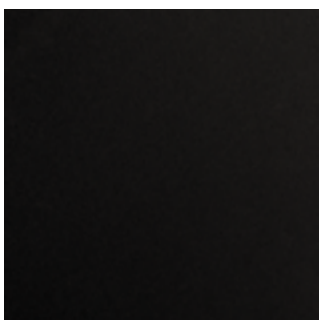
# SOFT POLYURETHANE

Our soft polyurethane products are comfortable, perfect for outdoors, and easy to maintain and clean. Featuring simple or more extravagant shapes, our soft polyurethane products offer a comfortable seat and many different colours.

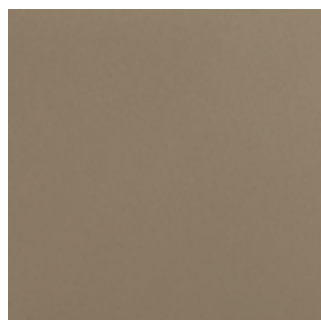
WE MAKE MATERIALS



soft white



soft black



soft argil



soft yellow



soft red



# TEXTILE

Seats become increasingly comfortable, without sacrificing any quality: in fact, some of our products have soft cushions covered in waterproof fabric or faux leather. Removable and machine-washable, they help you to relax more outdoors.



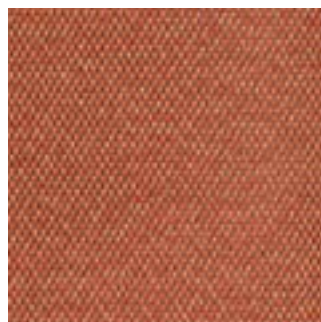
cotton white



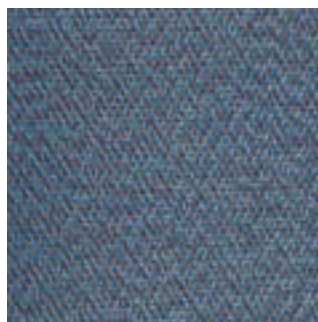
london brown



dune sand



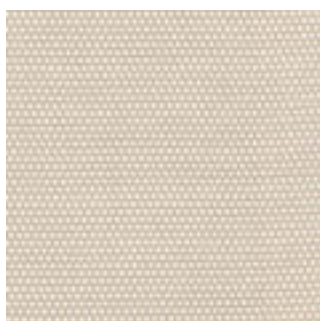
earth orange



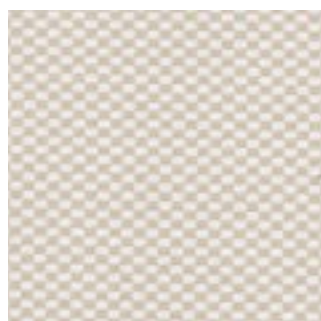
river blue



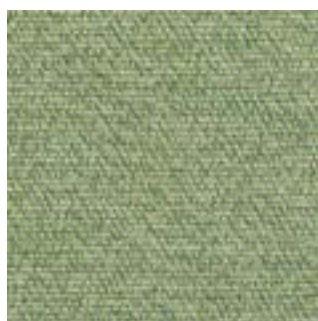
mineral grey



avena



simmetria avena



rosemary green



simmetria green



ivory white



melange ecru



ECOLEATHER cream



ECOLEATHER light grey



# HPL

Our tops are made from HPL, an easy material to clean and maintain, including outdoors, which is lightweight and resistant. They are available in classic white or with nuances that recall the natural textures of stone and wood.

WE MAKE MATERIALS



white



calacatta



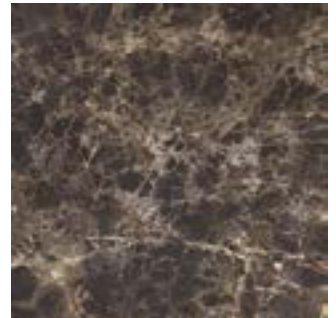
sierra



cementino



ardesia



imperiale veneto



rovere



wengé



light grey



saddle leather






**SLIDE srl**


Via Lazio 14  
20090 Buccinasco (Milano)  
Italy

showroom  
Foro Buonaparte 57  
20121 Milano - Italy

info@slidedesign.it  
www.slidedesign.it

 @SLIDEdesignmilano

 @slidedesign

 SLIDE srl

This publication has been produced  
and designed by SLIDE srl.

**art direction**

Ilaria Marelli Design  
Slide Studio  
Daniele Porta

**photo**

Miro Zagnoli - [www.mirozagnoli.it](http://www.mirozagnoli.it)

**thanks to**

p.13 - Ph. Carlo Lavatori - Archivio Alessandro Mendini.

pp.16-17 - Gianluigi Donnarumma e Alessia Elefante, Elisabetta Gregoraci, Natasha Stefanenko,  
Mauro Porcini, Lino Borrelli, Maud Anais Poudra, Studio Streberle, Thea (ph. Alberto Gorlini).

p.229 - Dalini.ch

**printed by**

Rotolito Spa - Milano

© JUNE 2022 SLIDE Srl

---

Images and technical specifications included in this catalogue are indicative. SLIDE srl reserves the right to make any changes or improvements without any prior notice. For further information, visit our website or contact our sales department.



